

# **SERVICE PARTS LIST FOR MITSUBISHI ELECTRIC PACKAGED AIR-CONDITIONERS**

**Series PFD-P250VM-A  
PFD-P500VM-A**

**For use with the R407C**

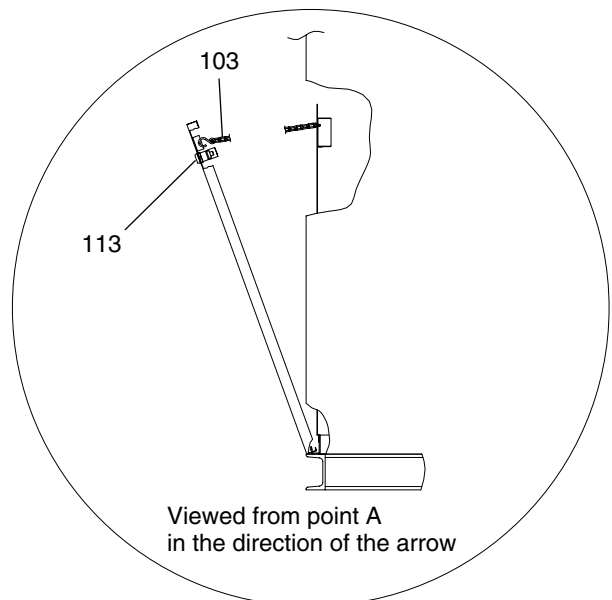
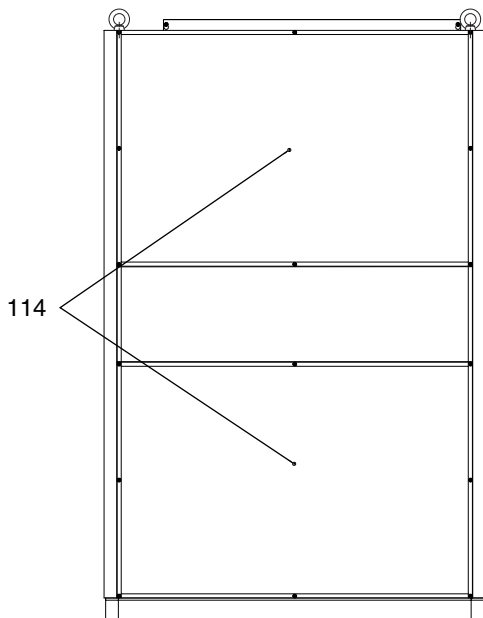
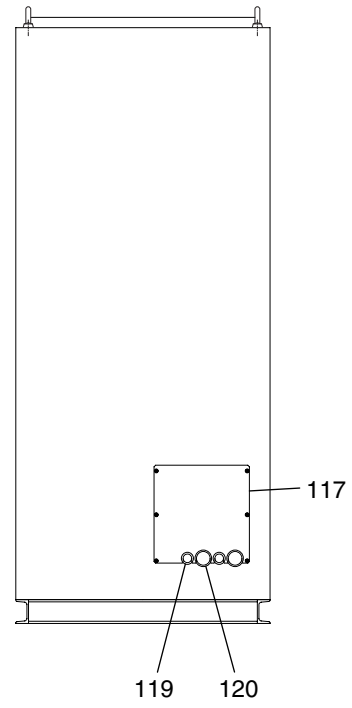
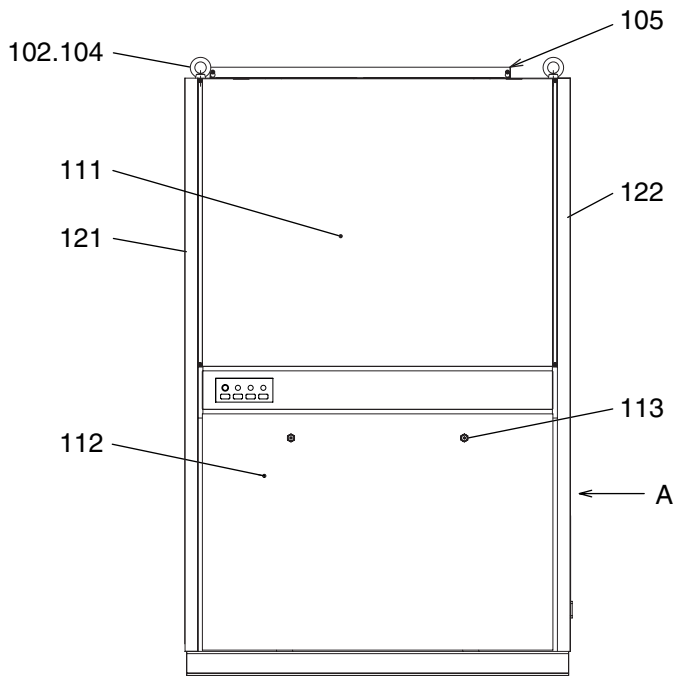
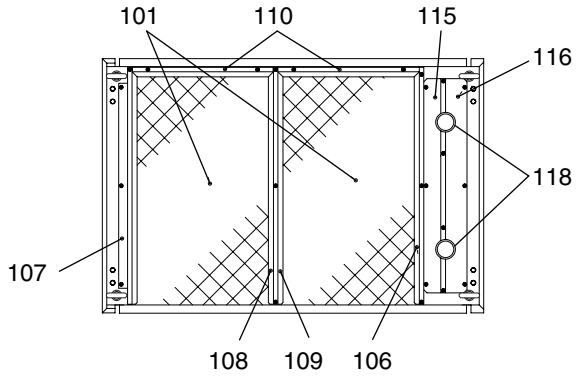
**REVISED  
Jun. 2004**

## **INDEX**

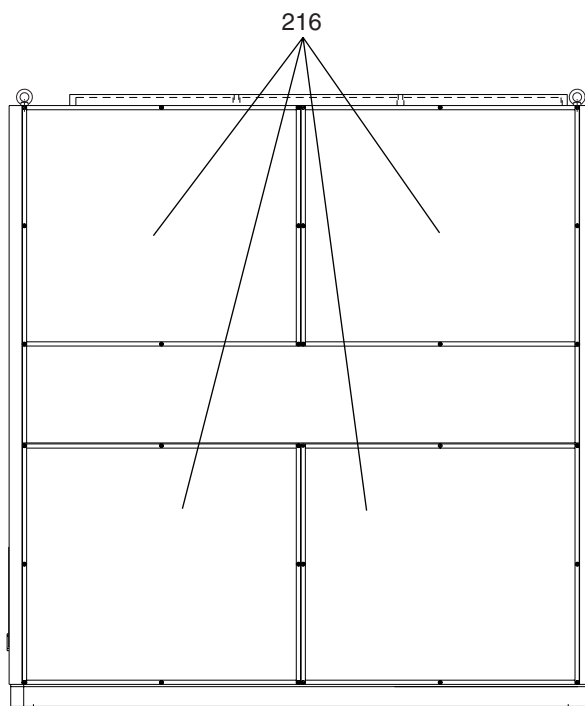
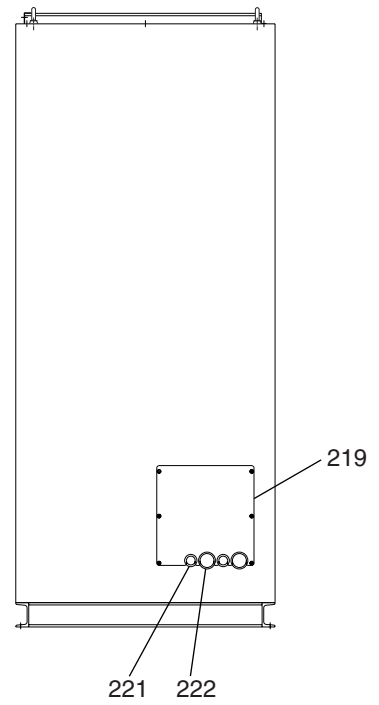
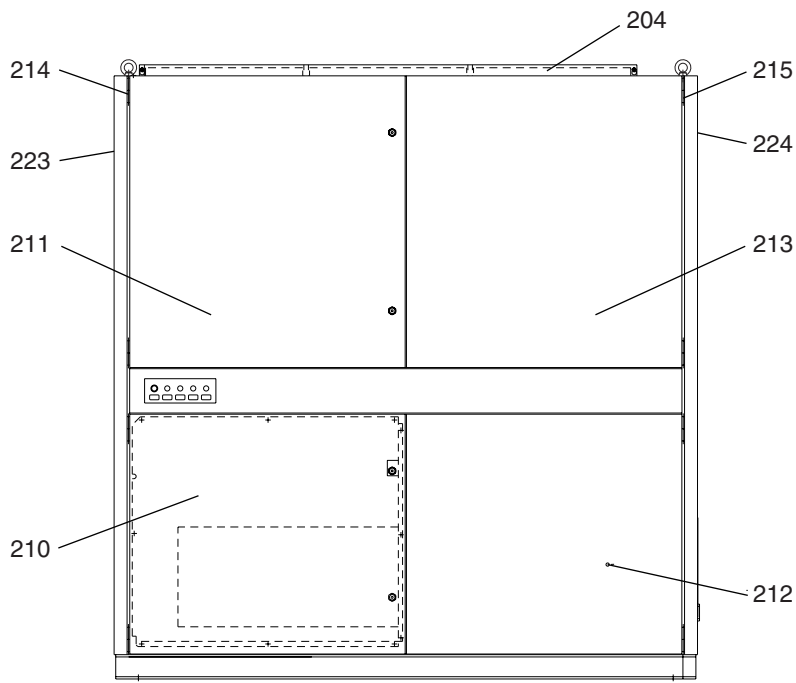
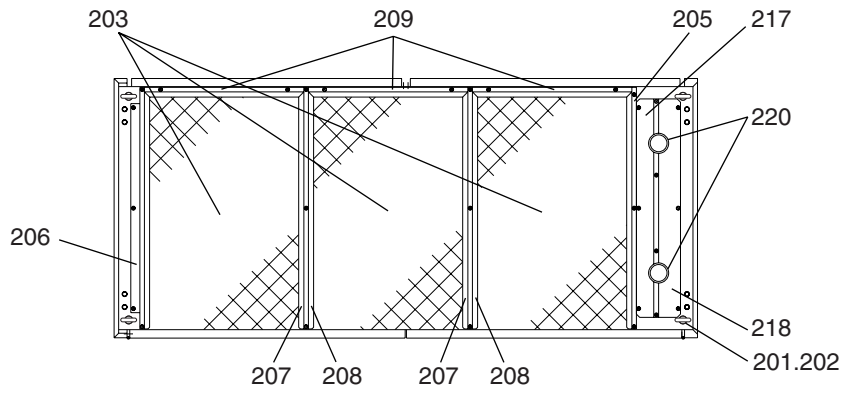
**PFD-P250VM-A**

**PFD-P500VM-A**

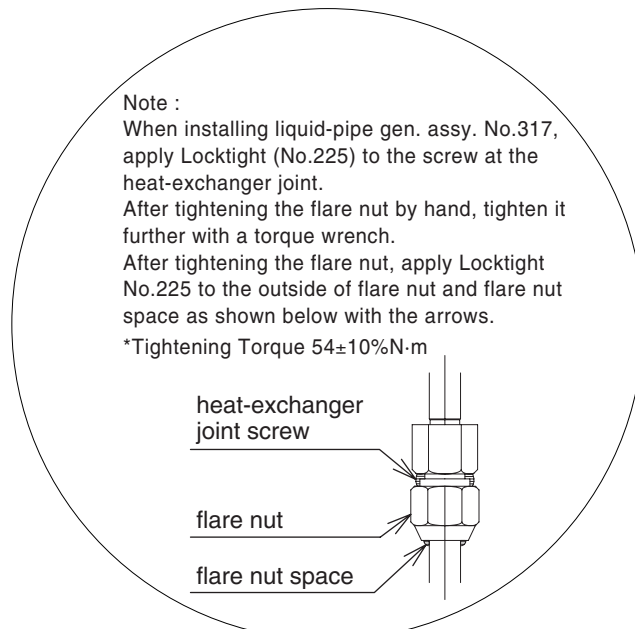
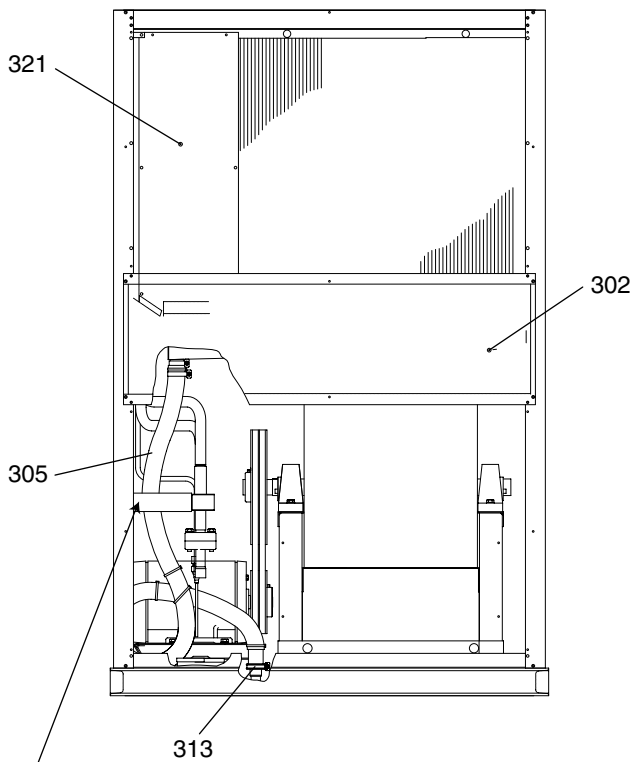
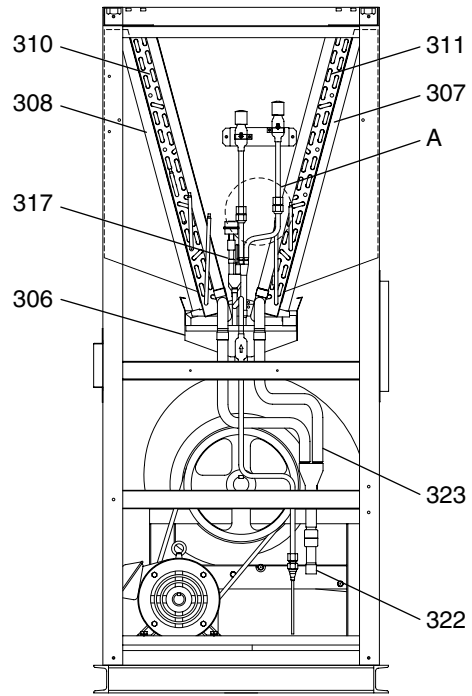
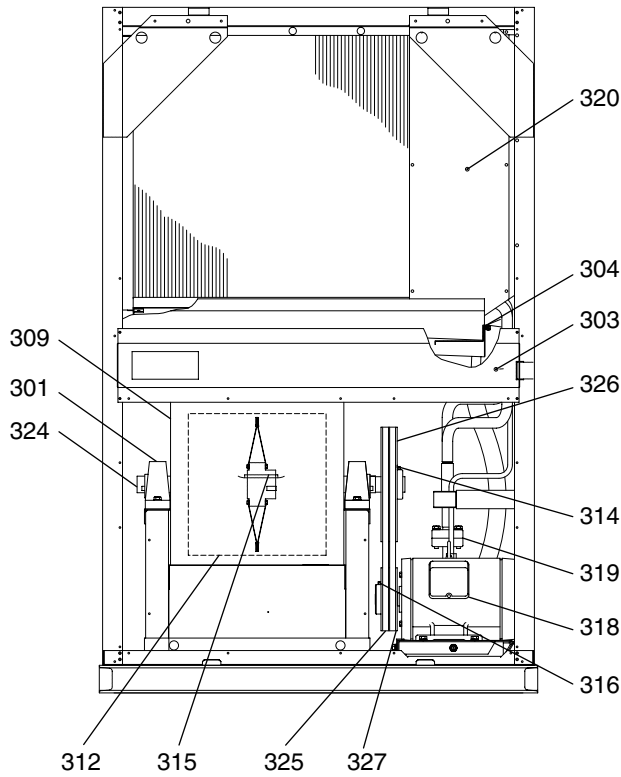




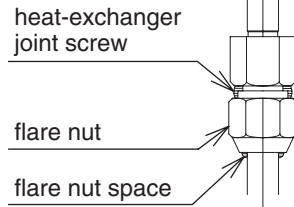
No.	Part No.	Part Name	Spec.	PFD-P250VM-A						Dwg. No.	Price
101	R61 N80 500	Air filter		2						P781202X02	
102	R61 L42 086	Cap	CP-30-BC-20	4						P655059X01	
103	R61 G85 631	Chain		2						W858977H02	
104	R61 K03 306	Eye bolt 20		4						S533121H03	
105	R61 N80 812	Filter cover		1						W894816G01	
106	R61 N61 162	Filter frame 1		1						W893039G01	
107	R61 N80 160	Filter frame 1 assy		1						W893040G01	
108	R61 L42 162	Filter frame 2		1						W885457G01	
109	R61 L42 163	Filter frame 2		1						W885457G02	
110	R61 N80 161	Filter frame 3		2						W894817G02	
111	R61 Y03 646	Front panel		1						W648303G03	
112	R61 N80 652	Front panel L assy		1						W648993G02	
113	R61 M29 060	Hexagonal Allen wrench lock		2						P687120X01	
114	R61 Y02 677	Panel B assy		2						W647760G03	
115	R61 N61 485	Pipe cover 1S assy		1						W891784G02	
116	R61 N62 485	Pipe cover 2S assy		1						W891785G02	
117	R61 N61 494	Pipe cover		1						W893062G01	
118	R61 N61 104	Rubber bush		2						W494705H04	
119	R61 N62 104	Rubber bush	SG-28A	2						P695016X01	
120	R61 N63 104	Rubber bush	SG-42A	2						S695002H06	
121	R61 Y22 652	Side panel L assy		1						W646647G08	
122	R61 Y23 652	Side panel R assy		1						W647300G10	







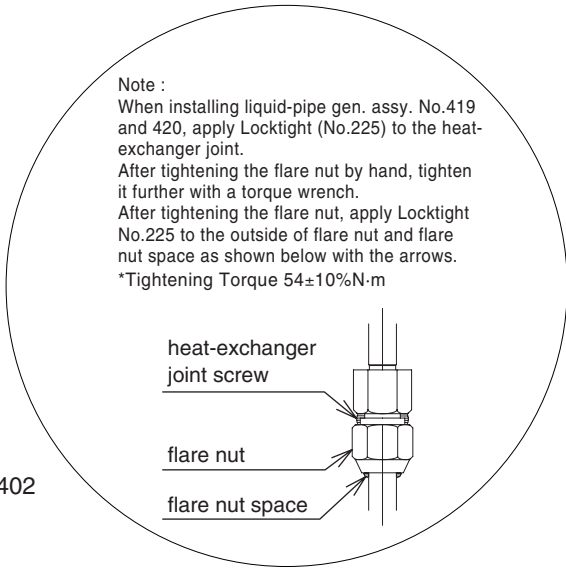
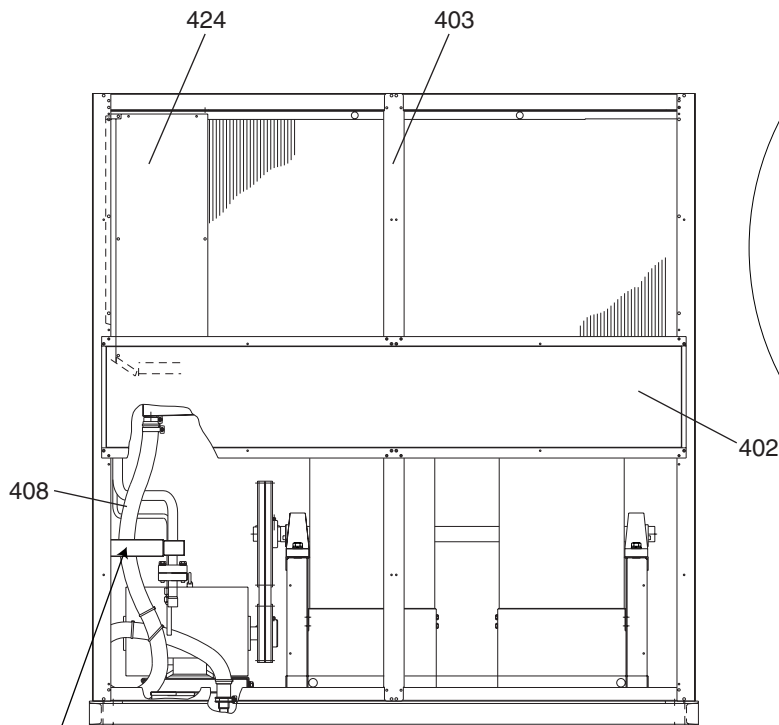
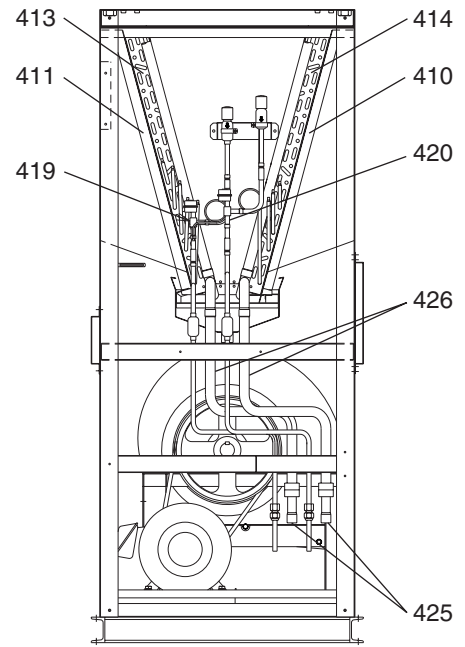
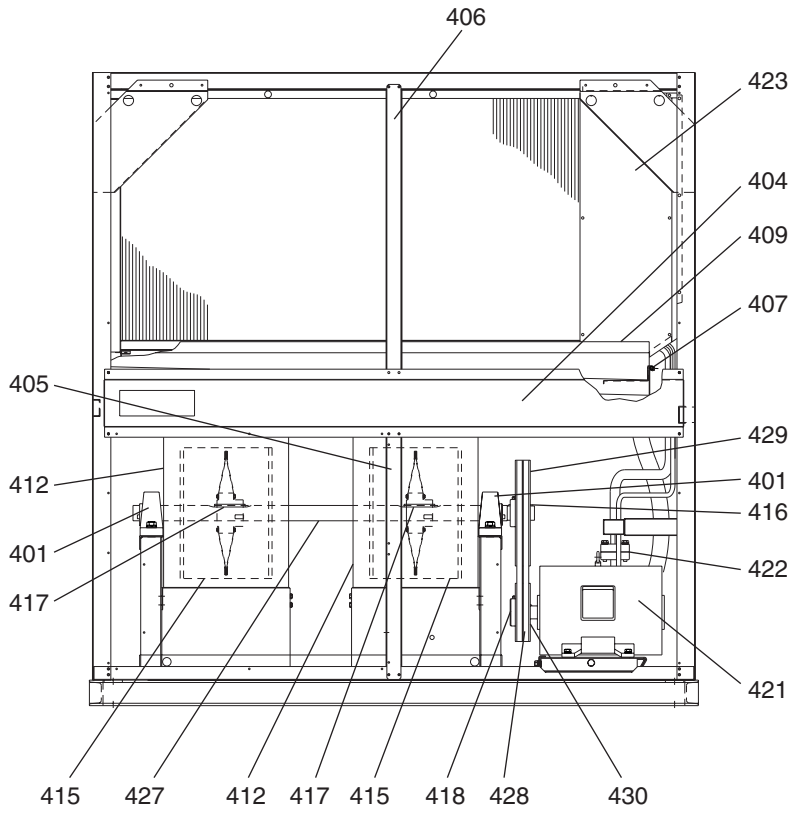
Note :  
 When installing liquid-pipe gen. assy. No.317,  
 apply Locktight (No.225) to the screw at the  
 heat-exchanger joint.  
 After tightening the flare nut by hand, tighten it  
 further with a torque wrench.  
 After tightening the flare nut, apply Locktight  
 No.225 to the outside of flare nut and flare nut  
 space as shown below with the arrows.  
 \*Tightening Torque  $54 \pm 10\% \text{N}\cdot\text{m}$



Detailed View of Section A

Note:  
 Drain hose must be kept within the specified frame.  
 Otherwise, it may come into contact with rotating parts and sustain  
 damage. Do not cut the cable ties on the drain hose. If the ties are  
 removed, the loop will come undone and will result in water leaks.

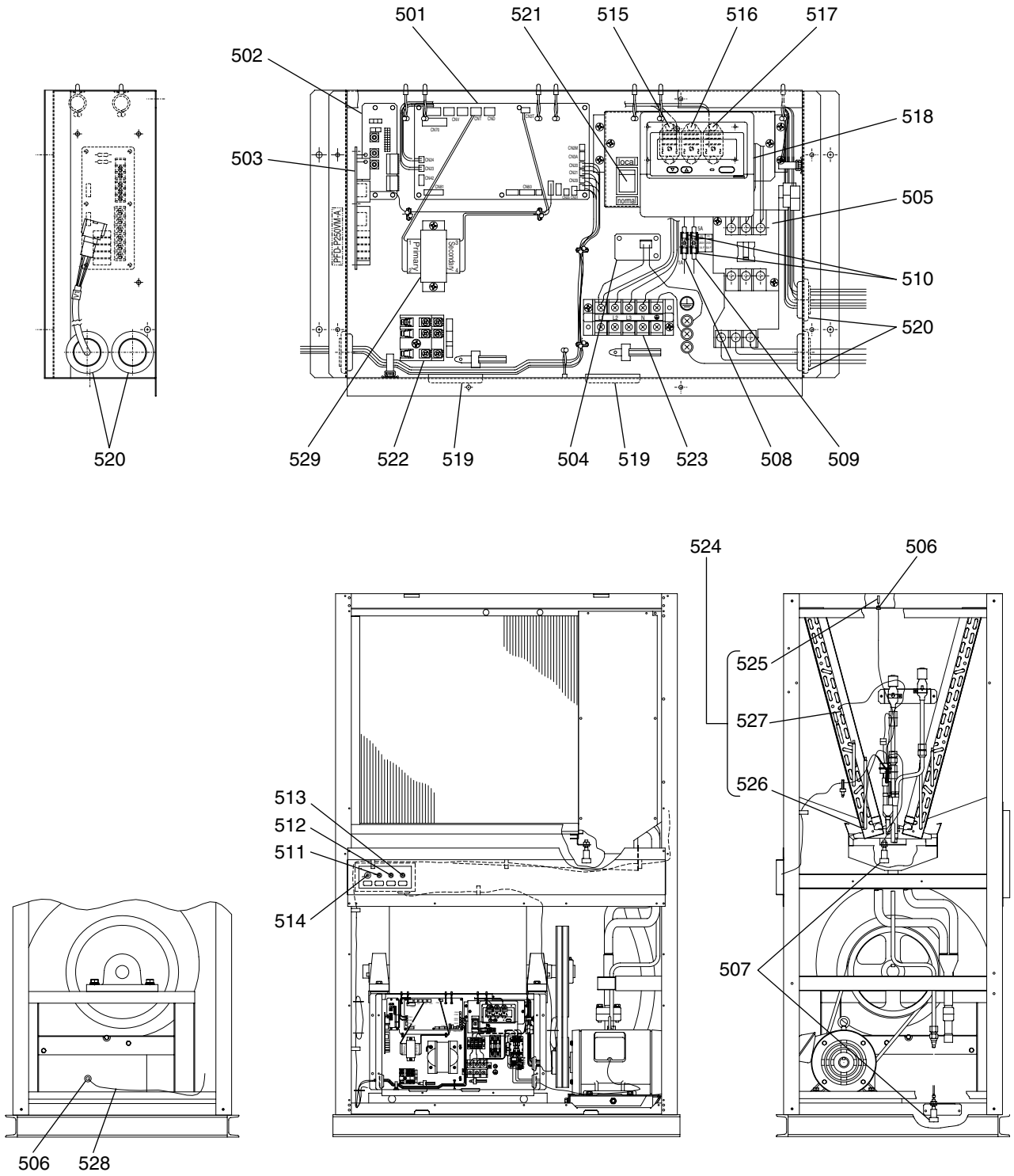
No.	Part No.	Part Name	Spec.	PFD-P250VM-A							Dwg. No.	Price
301	R61 L42 103	Ball bearing unit		2							W494665H04	
302	R61 N80 626	Beam B assy		1							W894814G01	
303	R61 Y22 629	Beam F assy		1							W647765G04	
304	R61 N61 465	Block board 2 assy		1							W897102G01	
305	R61 L42 525	Drain hose assy		1							W887889G02	
306	R61 Y25 529	Drain pan assy		1							W894810G05	
307	R61 Y11 501	Eliminator 280B		2							P781257X02	
308	R61 Y12 501	Eliminator 280F		2							P781256X02	
309	R61 Y01 109	Fan case	39-38	1							P713097X01	
310	R61 Y80 481	Heat exchanger assy 1		1							W272108G04	
311	R61 Y81 481	Heat exchanger assy 2		1							W272111G04	
312	R61 N80 114	High static pressure fan	39-38-45-R	1							P712271X01	
313	R61 A50 061	Hose clamp	1081-46	1							P694044X01	
314	R61 K03 138	Key	12x8x70	1							S596111H06	
315	R61 618 137	Key	12x8x90	1							S596111H12	
316	R61 N61 137	Key	8x7x50	1							W893033H01	
317	R61 N80 532	Liquid pipe assy		1							W648970G05	
318	R61 N66 220	Motor (MLA8115A-44AOA)	3-phase 400V 3.7kW 4P	1							S711012H06	
319	R61 A42 514	Packing		1							W833888H01	
320	R61 Y23 629	Partition board CIL 1		1							W887076H05	
321	R61 Y24 629	Partition board CIL 2		1							W887076H06	
322	R61 331 494	Pipe assy		1							W398555G02	
323	R61 Y08 494	Piping 1		1							W648910G05	
324	R61 N80 100	Shaft		1							W894699H01	
325	R61 L42 778	V-belt	B57	2							S614004K08	
326	R61 L42 108	V-pulley	300-B-2-42	1							P613108X01	
327	R61 N80 107	V-pulley	170-B-2	1							P613090X01	



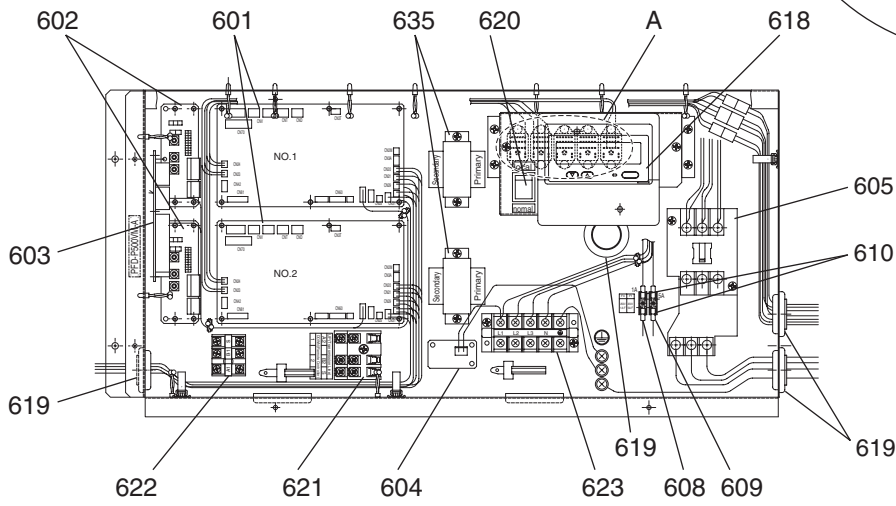
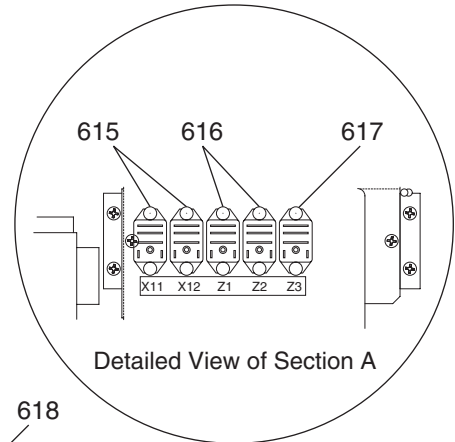
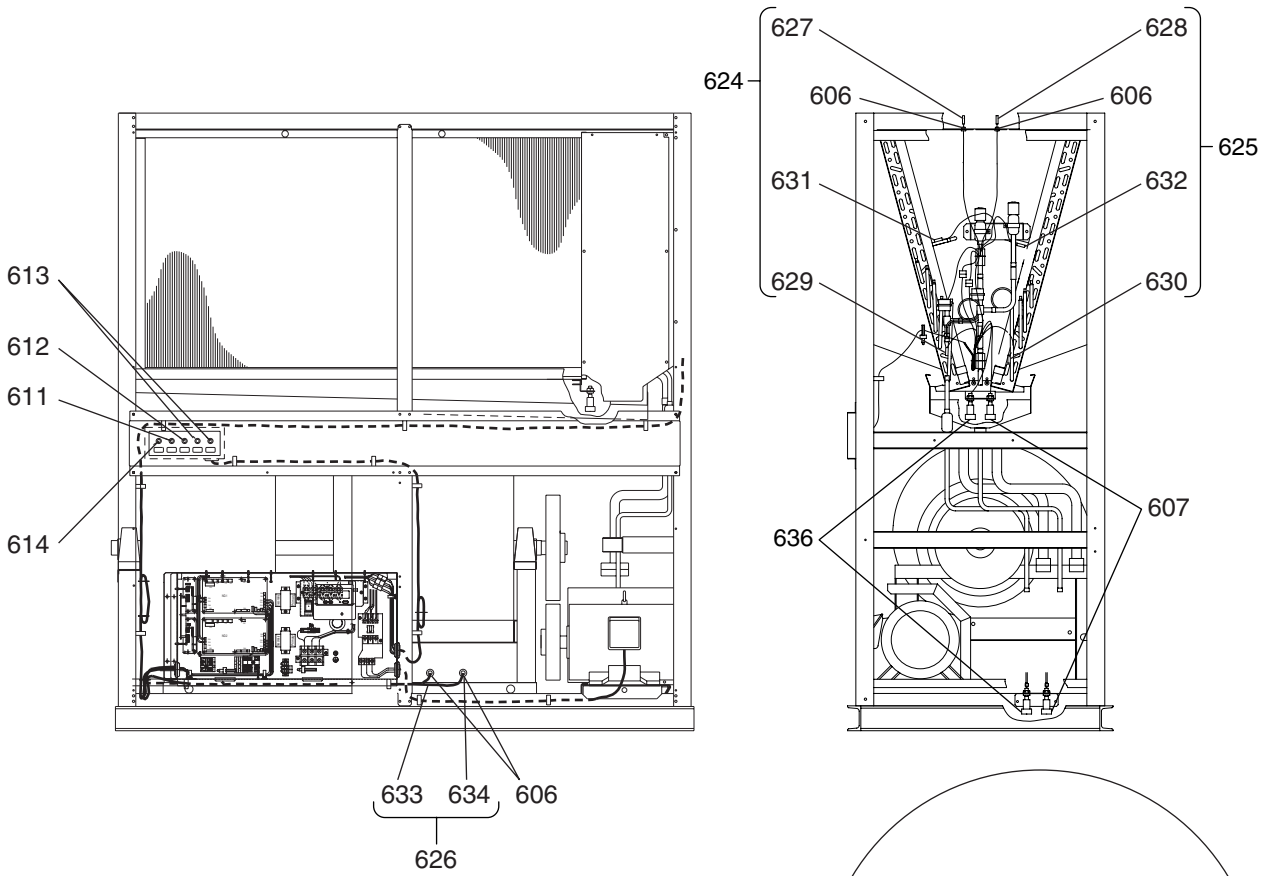
Note:  
 Drain hose must be kept within the specified frame.  
 Otherwise, it may come into contact with rotating parts and sustain damage. Do not cut the cable ties on the drain hose. If the ties are removed, the loop will come undone and will result in water leaks.



No.	Part No.	Part Name	Spec.	PFD-P500VM-A					Dwg. No.	Price
401	R61 L42 103	Ball bearing unit		2					W494665H04	
402	R61 N63 125	Beam B assy		1					W893027G01	
403	R61 N61 633	Beam BV assy		1					W893029G01	
404	R61 Y25 629	Beam F assy		1					W642079G05	
405	R61 Y26 629	Beam F1 assy		1					W902749G02	
406	R61 Y27 629	Beam F2 assy		1					W902710G02	
407	R61 N61 465	Block board 2 assy		1					W897102G01	
408	R61 L42 525	Drain hose assy		1					W887889G02	
409	R61 N61 529	Drain pan assy		1					W886605G03	
410	R61 Y13 501	Eliminator 560B		3					P781255X02	
411	R61 Y14 501	Eliminator 560F		3					P781254X02	
412	R61 Y02 109	Fan case 39-27		2					P713095X01	
413	R61 Y82 481	Heat exchanger assy 1		1					W269980G02	
414	R61 Y83 481	Heat exchanger assy 2		1					W269981G02	
415	R61 N61 114	High static pressure fan	39-27-45-R	2					P712256X01	
416	R61 K03 138	Key	12x8x70	1					S596111H06	
417	R61 618 137	Key	12x8x90	2					S596111H12	
418	R61 K03 137	Key	10x8x55	1					S596111H10	
419	R61 Y01 532	Liquid pipe assy		1					W648920G09	
420	R61 Y02 532	Liquid pipe assy		1					W648920G10	
421	R61 N65 220	Motor (MLA8133A-44AOA)	3-phase 400V 5.5kW 4P	1					S711012H02	
422	R61 A42 514	Packing		2					W833888H01	
423	R61 Y23 629	Partition board CIL 1		1					W887076H05	
424	R61 Y24 629	Partition board CIL 2		1					W887076H06	
425	R61 331 494	Pipe assy		2					W398555G02	
426	R61 N63 485	Piping 1		2					W888348G04	
427	R61 N61 100	Shaft		1					W645898H01	
428	R61 620 778	V-belt	B51	2					S614004H38	
429	R61 N63 108	V-pulley	250-B-2-42	1					P613195X01	
430	R61 N63 107	V-pulley	160-B-2-38	1					P613166X01	



No.	Part No.	Part Name	Spec.	PFD-P250VM-A					Dwg. No.	Price
501	R61 Y42 281	Board assy	PFD-PVM-A	1					W254572G29	
502	R61 L42 281	Board assy		1					W254668G01	
503	R61 Y43 281	Board assy	FP00S-OP3	1					W254584G03	
504	R61 Y22 280	Board assy	FP-DSA	1					W848419G01	
505	R61 Y34 225	Contactora (PAK-21JT)	3-240V 7.5(7.5A)	1					S427022H84	
506	R61 729 104	Cord bush	KR-51	2					P459023X01	
507	R61 Y01 541	Float switch assy 1		1					W655696G01	
508	R61 Y06 241	Fuse	250V 1A F	1					P423095X01	
509	R61 Y07 241	Fuse	250V 5A F	1					P423096X01	
510	R61 Y08 241	Fuse holder	BM-SS-I-14	2					S423003H05	
511	R61 Y06 217	LED (green)	AC240V D08-16HMJB G/G	1					P413060X01	
512	R61 Y07 217	LED (orange)	AC240V D08-16HMJB O/O	1					P413061X01	
513	R61 Y08 217	LED (red)	AC240V D08-16HMJB R/R	1					P413059X01	
514	R61 Y09 217	LED (White)	AC240V D08-16HMJB W/W	1					P413062X01	
515	R40 925 963	Relay LY2F	DC 12V	1					S421003H06	
516	R61 Y07 215	Relay LY2F	AC 240V	1					P421807X01	
517	R61 Y08 215	Relay LY2ZF	AC 240V	1					P421289X01	
518	R61 Y21 304	Rimocon	PAR-20MAA	1					W267102G61	
519	R61 N61 104	Rubber bush		2					W494705H04	
520	R61 Y04 104	Rubber bush		4					S695007H38	
521	R61 G95 206	Switch	LLK35C59	1					S422003H04	
522	R61 336 246	Terminal bed		1					P436114X03	
523	R61 Y05 246	Terminal bed	660V,40A	1					P436151X01	
524	R61 N61 200	Thermistor assy		1					W887893G05	
525	R61 L42 200	Thermistor assy		1					W887200G17	
526	R61 L42 202	Thermistor assy		1					W887200G19	
527	R61 L42 204	Thermistor assy		1					W887200G21	
528	R61 L42 212	Thermistor assy		1					W887200G23	
529	R61 Y08 260	Transformer		1					P715342X01	



No.	Part No.	Part Name	Spec.	PFD-P500VM-A					Dwg. No.	Price
601	R61 Y42 281	Board assy	PFD-PVM-A	2					W254572G29	
602	R61 L42 281	Board assy		2					W254668G01	
603	R61 Y43 281	Board assy	FP00S-OP3	1					W254584G03	
604	R61 Y22 280	Board assy	FP-DSA	1					W848419G01	
605	R61 Y35 225	Contacteur (PAK-21JT)	3-240V 11(12A)	1					S427022H68	
606	R61 729 104	Cord bush	KR-51	4					P459023X01	
607	R61 Y02 541	Float switch assy 2		1					W655696G02	
608	R61 Y06 241	Fuse	250V 1A F	1					P423095X01	
609	R61 Y07 241	Fuse	250V 5A F	1					P423096X01	
610	R61 Y08 241	Fuse holder	BM-SS-I-14	2					S423003H05	
611	R61 Y06 217	LED (green)	AC240V D08-16HMJB G/G	1					P413060X01	
612	R61 Y07 217	LED (orange)	AC240V D08-16HMJB O/O	1					P413061X01	
613	R61 Y08 217	LED (red)	AC240V D08-16HMJB R/R	2					P413059X01	
614	R61 Y09 217	LED (White)	AC240V D08-16HMJB W/W	1					P413062X01	
615	R40 925 963	Relay LY2F	DC 12V	2					S421003H06	
616	R61 Y07 215	Relay LY2F	AC 240V	2					P421807X01	
617	R61 Y08 215	Relay LY2ZF	AC 240V	1					P421289X01	
618	R61 Y21 304	Rimocon	PAR-20MAA	1					W267102G59	
619	R61 Y04 104	Rubber bush		5					S695007H38	
620	R61 G95 206	Switch	LLK35C59	1					S422003H04	
621	R61 336 246	Terminal bed	ETT-3P	1					P436114X03	
622	R61 Y08 715	Terminal bed		1					P436157X01	
623	R61 Y05 246	Terminal bed	660V,40A	1					P436151X01	
624	R61 N61 200	Thermistor assy 1		1					W887893G05	
625	R61 N63 200	Thermistor assy 2		1					W887893G06	
626	R61 N66 200	Thermistor assy F		1					W887895G03	
627	R61 L42 200	Thermistor assy		1					W887200G17	
628	R61 L42 201	Thermistor assy		1					W887200G18	
629	R61 L42 202	Thermistor assy		1					W887200G19	
630	R61 L42 203	Thermistor assy		1					W887200G20	
631	R61 L42 204	Thermistor assy		1					W887200G21	
632	R61 L42 211	Thermistor assy		1					W887200G22	
633	R61 L42 212	Thermistor assy		1					W887200G23	
634	R61 L42 213	Thermistor assy		1					W887200G24	
635	R61 Y08 260	Transformer		2					P715342X01	
636	R61 Y01 541	Float switch assy 1		1					W655696G01	

