

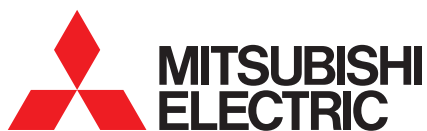


The PAC-YT52CRA is a simple to use remote controller which provides control over Mr Slim and City Multi indoor units.

It is also compatible with M Series indoor units via MAC-397IF and is ideal for use in hotels and luxury apartments.

Key Features

- Small and wall mounted
- 6 buttons only
- Backlight



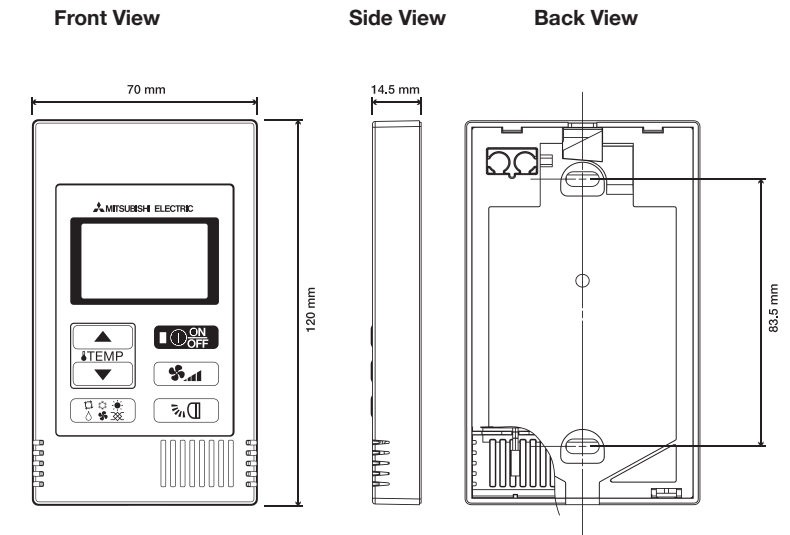
Air Conditioning | Heating
Ventilation | Controls



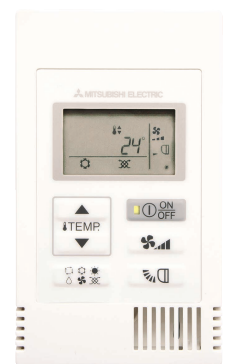
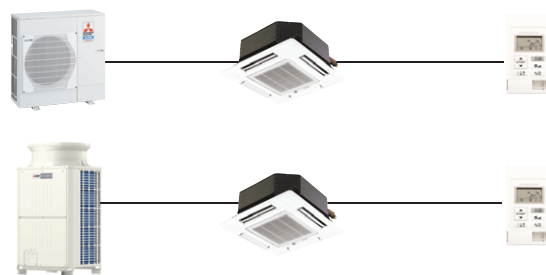
REMOTE CONTROLLER	PAC-YT52CRA
Description	Simplified Remote Controller
Connect to	Indoor
Max Number of Units	16
Compatibility	Mr Slim, City Multi and M Series via MAC-397IF
Power Supply	120 x 14.5 x 70
Dimensions (mm) (WxDxH)	✓
Control	
On/Off	✓
Mode	✓
Setpoint	✓
Fan Speed	✓
Air Direction	✓ ¹
Permit/Prohibit	x
Filter Sign	✓
Monitor	
On/Off	✓
Mode	✓
Setpoint	✓
Fan Speed	✓
Air Direction	✓ ¹
Permit/Prohibit	✓
Filter Sign	✓
Fault Codes	✓
Room Temperature	✓
Weekly Schedule	x
Annual Schedule	x
Night Set Back	x
Web Pages	x
Optimised Start	x
Automatic Setpoint Adjustment	x
Load Shedding	x
Occupied / Unoccupied Settings Reset	x
Remote Monitoring with M2M	x
Simple Energy Monitoring	x
Advanced Energy Monitoring	x

Notes: ¹ Permit/Prohibit is via Centralised Controllers. ✓ = Yes, x = No, - = Not applicable.

DIMENSIONS



SYSTEM DIAGRAM



Telephone: 01707 282880

email: air.conditioning@meuk.mee.com web: www.airconditioning.mitsubishielectric.co.uk

UNITED KINGDOM Mitsubishi Electric Europe Living Environmental Systems Division
Travellers Lane, Hatfield, Hertfordshire, AL10 8XB, England General Enquiries Telephone: 01707 282880 Fax: 01707 278881

IRELAND Mitsubishi Electric Europe Westgate Business Park, Ballymount, Dublin 24, Ireland
Telephone: Dublin (01) 419 8800 Fax: Dublin (01) 419 8890 International code: (003531)

Country of origin: United Kingdom – Japan – Thailand – Malaysia. ©Mitsubishi Electric Europe 2015. Mitsubishi and Mitsubishi Electric are trademarks of Mitsubishi Electric Europe B.V. The company reserves the right to make any variation in technical specification to the equipment described, or to withdraw or replace products without prior notification or public announcement. Mitsubishi Electric is constantly developing and improving its products. All descriptions, illustrations, drawings and specifications in this publication present only general particulars and shall not form part of any contract. All goods are supplied subject to the Company's General Conditions of Sale, a copy of which is available on request. Third-party product and brand names may be trademarks or registered trademarks of their respective owners.



Effective as of April 2015



www.greengateway.mitsubishielectric.co.uk

Mitsubishi Electric UK's commitment to the environment

Follow us @meuk_Jes
Follow us @green_gateway

Mitsubishi Electric
Living Environmental Systems UK

YouTube [mitsubishielectric2](https://www.youtube.com/mitsubishielectric2)