

Air Conditioning

Product Information

PEFY-WP15VMS1-E
Ultra Thin Ceiling Concealed
Ducted Indoor Unit (H-VRF)

Making a
World of
Difference

CITY MULTI



The ultra thin ceiling concealed ducted indoor unit offers increased flexibility and is particularly suitable for places where low noise operation is desired from a slimline body.

Key Features

- Ultra thin body - height of only 200mm & width of only 790mm
- Extremely quiet operation - as low as 22dBA
- Static pressure of 5-50Pa
- Ideal for hotel rooms



Air Conditioning | Heating
Ventilation | Controls



Air Conditioning

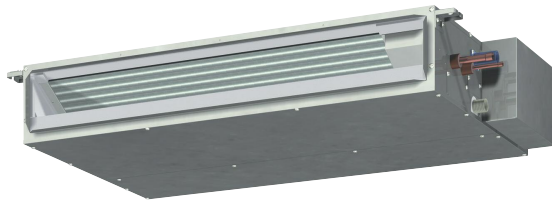
Product Information

PEFY-WP15VMS1-E Ultra Thin Ceiling Concealed Ducted Indoor Unit (H-VRF)

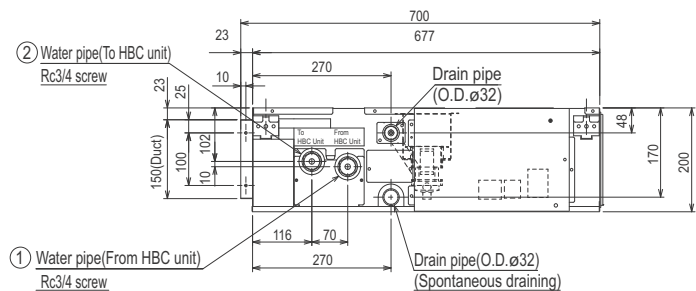
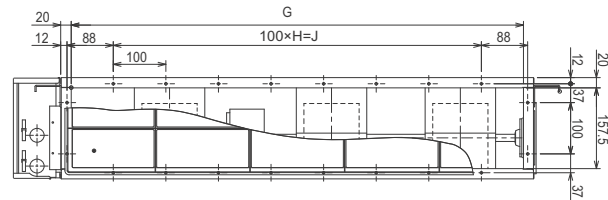
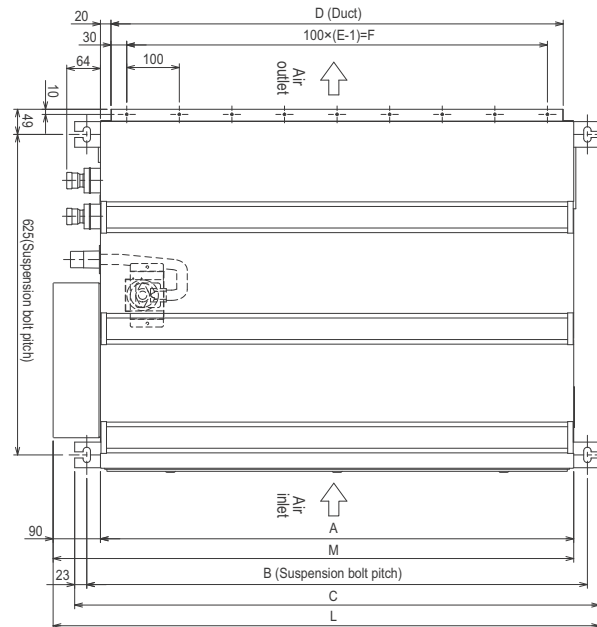
Making a
World of
Difference

PEFY - INDOOR UNIT		PEFY-WP15VMS1-E
CAPACITY (kW)	Heating (nominal)	1.9
	Cooling (nominal)	1.7
	UK Heating	1.9
	UK Total Cooling - Hi (Sensible)	1.50 (1.50)
	UK Total Cooling - Mi1	1.44
POWER INPUT (kW)	Heating (nominal)	0.03
	Cooling (nominal)	0.05
	UK Total Cooling - Lo	1.34
AIRFLOW (l/s)	Lo-Mi-Hi	83-100-117
EXTERNAL STATIC PRESSURE (Pa)		5-15-35-50
SOUND PRESSURE LEVEL (dBA) Lo-Mi1-Hi		22-24-28
WEIGHT (kg)		19
	DIMENSIONS (mm)	
	Width	790
Depth	700	
Height	200	
ELECTRICAL SUPPLY		220-240v, 50Hz
PHASE		Single
RUNNING CURRENT (A)	Heating / Cooling	0.33 / 0.44
FUSE RATING (BS88) - HRC (A)		6
MAINS CABLE No. Cores		3

Notes:
H-VRF indoor units can only be configured with the CMB-WP HBC (H-VRF) and PURY-(E)P YLM-A or PQRY-P YLM outdoor units. Indoor unit water connections 3/4" BSP screw.



DIMENSIONS



Model	A	B	C	D	E	F	G	H	J	K	L	M	① Water pipe (From HBC unit)	② Water pipe (To HBC unit)
PEFY-WP15VMS1-E													Rc3/4 screw	
PEFY-WP20VMS1-E	700	752	798	860	7	600	660	5	500	16	839	790		
PEFY-WP25VMS1-E														
PEFY-WP32VMS1-E	900	952	998	860	9	800	860	7	700	20	1039	990		
PEFY-WP40VMS1-E	1100	1152	1198	1060	11	1000	1060	9	900	24	1239	1190		



Telephone: 01707 282880

email: air.conditioning@meuk.mee.com web: www.airconditioning.mitsubishielectric.co.uk

UNITED KINGDOM Mitsubishi Electric Europe Living Environmental Systems Division
Travellers Lane, Hatfield, Hertfordshire, AL10 8XB, England General Enquiries Telephone: 01707 282880 Fax: 01707 278881

IRELAND Mitsubishi Electric Europe Westgate Business Park, Ballymount, Dublin 24, Ireland
Telephone: Dublin (01) 419 8800 Fax: Dublin (01) 419 8890 International code: (003531)

Country of origin: United Kingdom - Japan - Thailand - Malaysia. ©Mitsubishi Electric Europe 2016. Mitsubishi and Mitsubishi Electric are trademarks of Mitsubishi Electric Europe B.V. The company reserves the right to make any variation in technical specification to the equipment described, or to withdraw or replace products without prior notification or public announcement. Mitsubishi Electric is constantly developing and improving its products. All descriptions, illustrations, drawings and specifications in this publication present only general particulars and shall not form part of any contract. All goods are supplied subject to the Company's General Conditions of Sale, a copy of which is available on request. Third-party product and brand names may be trademarks or registered trademarks of their respective owners.



Note: The fuse rating is for guidance only. Please refer to the relevant databook for detailed specification. It is the responsibility of a qualified electrician/electrical engineer to select the correct cable size and fuse rating based on current regulation and site specific conditions. Mitsubishi Electric's air conditioning and heat pump systems contain fluorinated greenhouse gases R410A, R407C and R134a.



www.greengateway.mitsubishielectric.co.uk

Mitsubishi Electric UK's commitment to the environment

Follow us @meuk_Jes
Follow us @green_gateway

Mitsubishi Electric
Living Environmental Systems UK

mitsubishielectric2

Effective as of February 2016