

# Air Conditioning

## Product Information

### PLFY-WP32VBM-E

4-Way Blow Ceiling Cassette  
Indoor Unit (H-VRF)

Making a  
World of  
Difference

CITY MULTI



Power cassettes offer 72 different airflow patterns, with the ability to handle a multitude of ceiling applications up to 4.2 metres in height. The easy to install, slim unit is ideal for maintaining constant temperatures, thanks to adjustable vanes that allow users to precisely direct air where it's needed.

### Key Features

- Handy corner pocket design simplifies maintenance
- Airflow controllable for ceiling heights up to 4.2m, with automatic adjustment of fan speed
- Reduced draft air distribution, with independent vane control
- Drain pump as standard, 850mm from drain pan
- Filter lowering operation down to 4m (optional PLP-6BAJ grille required)
- Optional 'i-see Sensor' for energy saving and smooth temperature control throughout the room



Air Conditioning | Heating  
Ventilation | Controls

# Air Conditioning

## Product Information

### PLFY-WP32VBM-E 4-Way Blow Ceiling Cassette Indoor Unit (H-VRF)

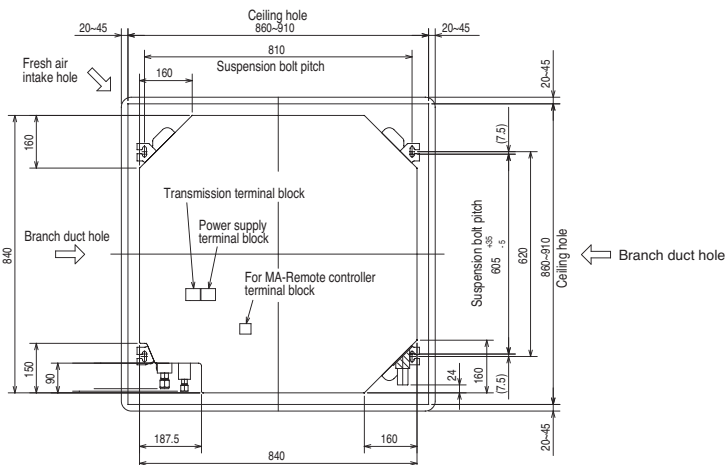
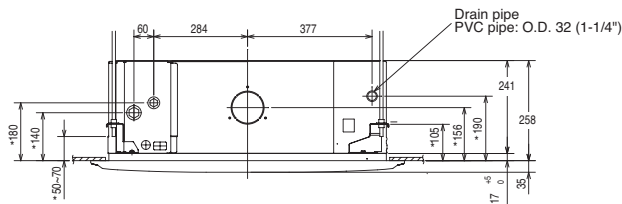
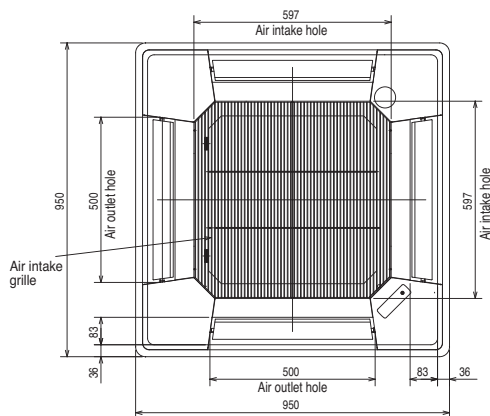
Making a  
World of  
Difference

PLFY - INDOOR UNIT		PLFY-WP32VBM-E
CAPACITY (kW)	Heating (nominal)	4.0
	Cooling (nominal)	3.6
	UK Heating	4.0
	UK Total Cooling - Hi (Sensible)	3.20 (3.20)
	UK Total Cooling - Mi2	3.16
POWER INPUT (kW)	UK Total Cooling - Mi1	3.09
	UK Total Cooling - Lo	3.02
	Heating (nominal)	0.03
AIRFLOW (l/s)	Cooling (nominal)	0.04
	Lo-Mi1-Mi2-Hi	217-233-250-267
SOUND PRESSURE LEVEL (dBA) Lo-Mi1-Mi2-Hi		27-29-30-31
WEIGHT (kg)		22
	Width	840
	Depth	840
DIMENSIONS (mm)	Height	258
ELECTRICAL SUPPLY		220-240v, 50/60Hz
PHASE		Single
RUNNING CURRENT (A) Heating / Cooling		0.28 / 0.35
FUSE RATING (BS88) - HRC (A)		6
MAINS CABLE NO. CORES		3
GRILLE MODEL REFERENCE		PLP-6BA

#### Notes:

H-VRF indoor units can only be configured with the CMB-WP HBC (H-VRF) and PURY(E)P YLM-A or PQRY-P YLM outdoor units. Indoor unit water connections 3/4" BSP screw.

## DIMENSIONS



Telephone: 01707 282880

email: [air.conditioning@meuk.mee.com](mailto:air.conditioning@meuk.mee.com) web: [www.airconditioning.mitsubishielectric.co.uk](http://www.airconditioning.mitsubishielectric.co.uk)

UNITED KINGDOM Mitsubishi Electric Europe Living Environmental Systems Division  
Travellers Lane, Hatfield, Hertfordshire, AL10 8XB, England General Enquiries Telephone: 01707 282880 Fax: 01707 278881

IRELAND Mitsubishi Electric Europe Westgate Business Park, Ballymount, Dublin 24, Ireland  
Telephone: Dublin (01) 419 8800 Fax: Dublin (01) 419 8890 International code: (003531)

Country of origin: United Kingdom - Japan - Thailand - Malaysia. ©Mitsubishi Electric Europe 2016. Mitsubishi and Mitsubishi Electric are trademarks of Mitsubishi Electric Europe B.V. The company reserves the right to make any variation in technical specification to the equipment described, or to withdraw or replace products without prior notification or public announcement. Mitsubishi Electric is constantly developing and improving its products. All descriptions, illustrations, drawings and specifications in this publication present only general particulars and shall not form part of any contract. All goods are supplied subject to the Company's General Conditions of Sale, a copy of which is available on request. Third-party product and brand names may be trademarks or registered trademarks of their respective owners.



**Note:** The fuse rating is for guidance only. Please refer to the relevant databook for detailed specification. It is the responsibility of a qualified electrician/electrical engineer to select the correct cable size and fuse rating based on current regulation and site specific conditions. Mitsubishi Electric's air conditioning and heat pump systems contain fluorinated greenhouse gases R410A, R407C and R134a.



[www.greengateway.mitsubishielectric.co.uk](http://www.greengateway.mitsubishielectric.co.uk)

Mitsubishi Electric UK's commitment  
to the environment



Follow us @meuk\_Jes  
Follow us @green\_gateway



Mitsubishi Electric  
Living Environmental Systems UK



mitsubishielectric2

Effective as of February 2016