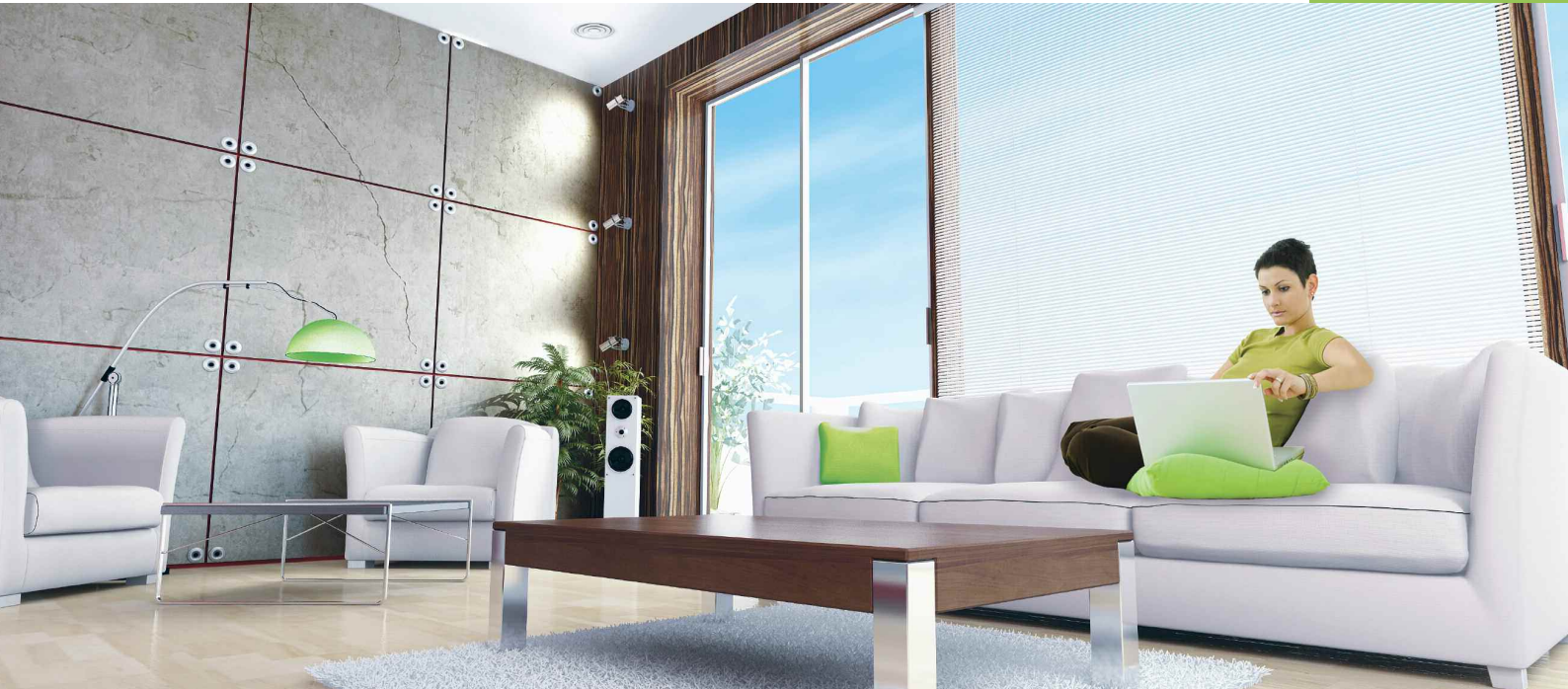


Ventilation

Product Information

LGH-50RSDC-E1
Total Heat Exchanger

Making a
World of
Difference



Whole house ventilation with DC Lossnay

DC Lossnay is Mitsubishi Electric's latest generation of whole house MVHR.

Using a highly efficient total heat exchanger constructed from a specially treated paper, DC Lossnay provides a constant supply of controlled, pre-heated/cooled, fresh air for improved climate control and reduced energy bills.

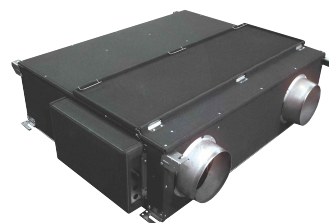
Key Features

- Improved air quality and comfort
- Energy efficient heat recovery
- SAP Appendix Q listed product
- More climate control
- Reduced energy bills
- Quiet operation
- Total heat exchange (sensible and latent)



Air Conditioning | Heating
Ventilation | Controls





FEATURES



Auto-Restart

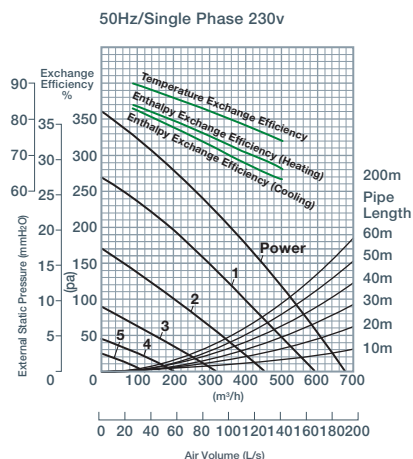
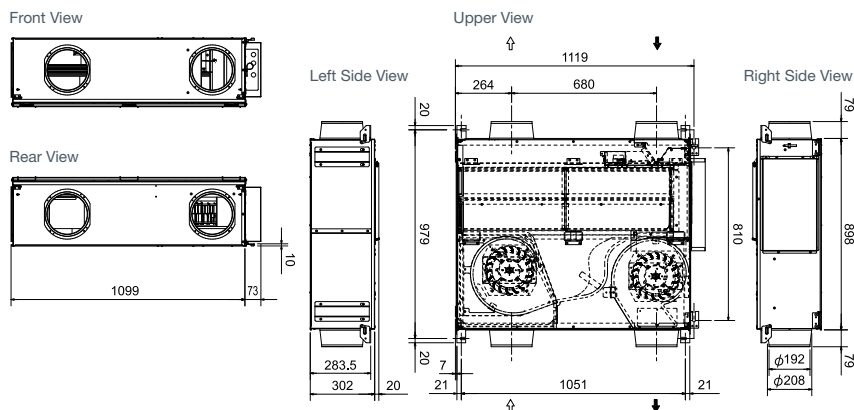


Standard filter

LOSSNAY		LGH-50RSDC-E1										
Electrical Power Supply		220-240V, 50Hz										
Starting Current (A)		2.5										
Ventilation Mode		Lossnay					Bypass					
Fan Speed		1	2	3	4	5	POWER	1	2	3	4	5
Input Power (W)		165	90	41	22	14	265	164	90	40	21	14
Airflow (m³/h)		395	305	215	144	90	468	395	305	215	144	90
Airflow (l/s)		110	85	60	40	25	130	110	85	60	40	25
External Static Pressure (Pa)		100	60	30	15	7	135	100	60	30	15	7
Sound Pressure Level (dBA)		31	26.5	21	18	18	35	31	26.5	21	18	18
Temperature Exchange Efficiency (%)		77.5	81.5	85.5	88	90	-	-	-	-	-	-
Enthalpy Exchange	Heating	71	75	79	82	84	-	-	-	-	-	-
Efficiency (%)	Cooling	68	72.5	77	80.5	83	-	-	-	-	-	-
Weight (kg)		48										
Dimensions (mm)	Width x Depth x Height	1099 + 73 x 898 x 302										
Duct Size (mm)		200										
Fuse Rating (BS88) - HRC (A)		6										
Mains Cable No. Cores		3										

LGH-50RSDC-E1 DIMENSIONS

CHARACTERISTIC CURVE



OPTIONAL CONTROLLER



■ Part No. DC-5 Speed



Telephone: 01707 282880

email: ventilation@meuk.mee.com web: www.airconditioning.mitsubishielectric.co.uk

UNITED KINGDOM Mitsubishi Electric Europe Living Environmental Systems Division
Travellers Lane, Hatfield, Hertfordshire, AL10 8XB, England General Enquiries Telephone: 01707 282880 Fax: 01707 278881

IRELAND Mitsubishi Electric Europe Westgate Business Park, Ballymount, Dublin 24, Ireland
Telephone: Dublin (01) 419 8800 Fax: Dublin (01) 419 8890 International code: (003531)

Country of origin: United Kingdom - Japan - Thailand - Malaysia. ©Mitsubishi Electric Europe 2013. Mitsubishi and Mitsubishi Electric are trademarks of Mitsubishi Electric Europe B.V. The company reserves the right to make any variation in technical specification to the equipment described, or to withdraw or replace products without prior notification or public announcement. Mitsubishi Electric is constantly developing and improving its products. All descriptions, illustrations, drawings and specifications in this publication present only general particulars and shall not form part of any contract. All goods are supplied subject to the Company's General Conditions of Sale, a copy of which is available on request. Third-party product and brand names may be trademarks or registered trademarks of their respective owners.



Effective as of February 2013



www.greengateway.mitsubishielectric.co.uk

Mitsubishi Electric UK's commitment to the environment



Follow us @green_gateway



Connect with Green Gateway



mitsubishielectric2