



# LGH-150RX4

Lossnay

Commercial Series



This commercially orientated system can be utilised virtually anywhere to extract stale air and then recover the heating or cooling energy to either warm or cool incoming fresh air.

- **Effective fresh air ventilation**
- **High heat recovery**
- **Free cooling function**
- **Good sound attenuation**
- **New "Hyper Lossnay Core". At only 25um (approx 1/5 the thickness of LGH-RX3) the Lossnay core uses the thinnest paper in the world to achieve high enthalpy exchange efficiency**



Pictures not to scale

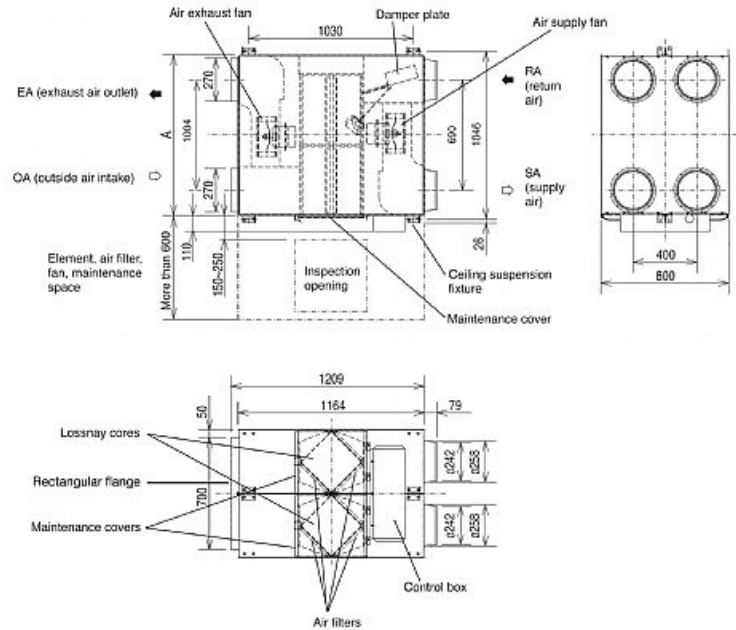
## Product Details

### LGH-150RX4

Airflow (m3/h) - Lossnay Ventilation - Lo-Hi-ExHi	1250-1500-1500
Noise (dBA) - Lossnay Ventilation - Lo-Hi-ExHi	33.5-36.5-37.5
Noise (dBA) - Bypass Ventilation - Lo-Hi-ExHi	36.5-38.5-40
Width - mm	1004
Depth - mm	1164
Height - mm	800
Weight - kg	124
Electrical Supply	220-240v,50Hz
Fuse Rating (BS88) - HRC (A)	16
Duct Size (mm)	270
Power Input (W) - Extra high	770
Starting Current (A)	7.2
Running Current - Low	2.70
Running Current - High	3.10
Running Current - Extra High	3.30
Mains Cable No. Cores	3
Temperature Exchange Efficiency (%) - Low	81.5
Temperature Exchange Efficiency (%) - High	79
Temperature Exchange Efficiency (%) - Extra High	79

## Dimensions

### LGH-150RX4



Telephone: 01707 282880

Email: [air.conditioning@meuk.mee.com](mailto:air.conditioning@meuk.mee.com) Website: <http://www.mitsubishielectric.co.uk/aircon>

Mitsubishi Electric reserves the right to make any variation in technical specification to the equipment described, or to withdraw or replace products without prior notification or public announcement.

Tel:  
Fax:

