



LGH-50RX4

Lossnay

Commercial Series



This commercially orientated system can be utilised virtually anywhere to extract stale air and then recover the heating or cooling energy to either warm or cool incoming fresh air.

- **Effective fresh air ventilation**
- **High heat recovery**
- **Free cooling function**
- **Good sound attenuation**
- **New "Hyper Lossnay Core". At only 25um (approx 1/5 the thickness of LGH-RX3) the Lossnay core uses the thinnest paper in the world to achieve high enthalpy exchange efficiency**



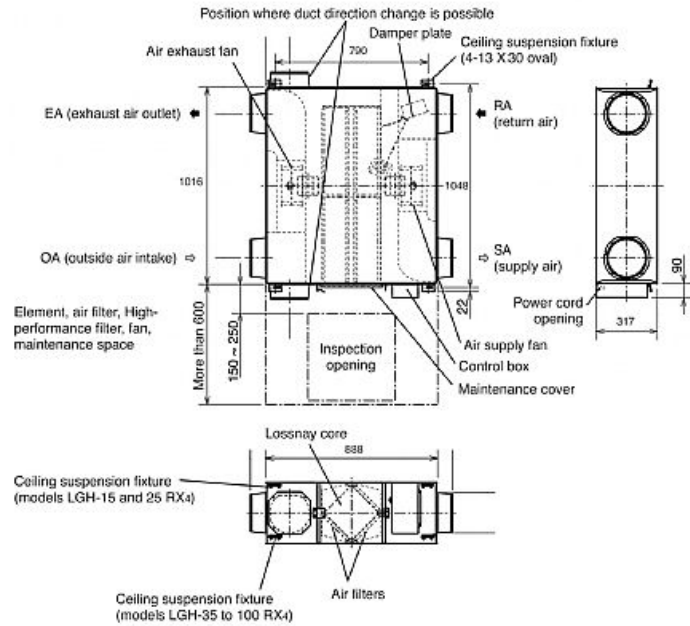
Pictures not to scale

Product Details

LGH-50RX4	
Airflow (m3/h) - Lossnay Ventilation - Lo-Hi-ExHi	350-500-500
Noise (dBA) - Lossnay Ventilation - Lo-Hi-ExHi	24.5-31.5-34
Noise (dBA) - Bypass Ventilation - Lo-Hi-ExHi	25.5-33-35.5
Width - mm	1016
Depth - mm	888
Height - mm	317
Weight - kg	33
Electrical Supply	220-240v,50Hz
Fuse Rating (BS88) - HRC (A)	6
Duct Size (mm)	200
Power Input (W) - Extra high	228
Starting Current (A)	1.9
Running Current - Low	0.60
Running Current - High	0.93
Running Current - Extra High	0.96
Mains Cable No. Cores	3
Temperature Exchange Efficiency (%) - Low	82
Temperature Exchange Efficiency (%) - High	77
Temperature Exchange Efficiency (%) - Extra High	77

Dimensions

LGH-50RX4



Telephone: 01707 282880

Email: air.conditioning@meuk.mee.com Website: <http://www.mitsubishielectric.co.uk/aircon>

Mitsubishi Electric reserves the right to make any variation in technical specification to the equipment described, or to withdraw or replace products without prior notification or public announcement.

Tel:
Fax:

