

Air Conditioning

Product Information

MFZ-KJ25VE : Inverter Heat Pump

R410A Floor Mounted System



This series is extremely versatile and is designed for wall attached installation at floor level. The auto swing vane provides a more natural and comfortable airflow throughout the room and the lightweight, compact design makes installation easy.

FEATURES



INDOOR

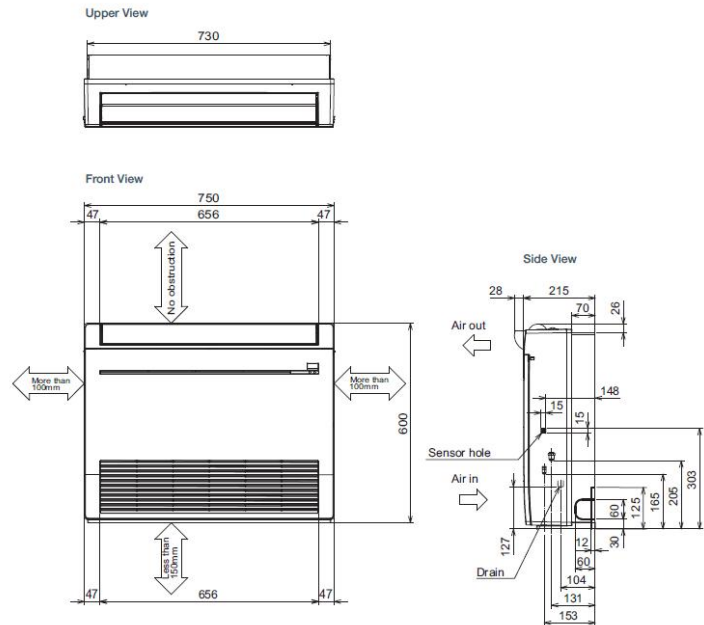
Heating Capacity (kW) (nominal)	3.4 (1.2 - 4.6)
Cooling Capacity (kW) (nominal)	2.5 (0.5 - 3.4)
Heating Capacity (kW) (UK)	2.83 (0.99 - 3.82)
Cooling Capacity (kW) (UK)	2.5 (0.49 - 3.37)
SHF (nominal and UK)	0.66
COP / EER (nominal)	4.42 / 4.63
SCOP / SEER	4.5 / 8.5
Energy Label (nominal)	A+ / A+++
Airflow (m ³ /min) (Heating) - Lo-Mi-Hi-SupHi	3.9 - 5.1 - 6.2 - 9.7
Airflow (m ³ /min) (Cooling) - Lo-Mi-Hi-SupHi	3.9 - 4.9 - 5.9 - 8.2
Pipe Size Gas (mm [in])	9.52 (3/8")
Pipe Size Liquid (mm [in])	6.35 (1/4")
Sound Pressure Level (dBA) Heating - Lo-Mi-Hi-SupHi	20 - 25 - 30 - 35
Sound Pressure Level (dBA) Cooling - Lo-Mi-Hi-SupHi	19 - 25 - 30 - 41
Sound Power Level (dBA) Cooling	49
Dimensions (mm) Width x Depth x Height	750 x 215 x 600
Weight (kg)	15
Electrical Supply	FED BY OUTDOOR UNIT
Phase	SINGLE
Fuse Rating (BS88) - HRC (A)	6
Interconnecting Cable No. Cores	4

OUTDOOR

Sound Pressure Level (dBA) Heating / Cooling	51 / 46
Sound Power Level (dBA) Cooling	59
Weight (kg)	37
Dimensions (mm) Width x Depth x Height	800 x 285 x 550
Electrical Supply	220-240V, 50HZ
Phase	SINGLE
System Power Input (kW) - Heating / Cooling (nominal)	0.77 / 0.54
System Power Input (kW) - Heating / Cooling (UK)	0.7 / 0.43
Starting Current (A)	3.6
System Running Current (A) [MAX] - Heating / Cooling	3.6 / 2.7 [8.4]
Fuse Rating (BS88) - HRC (A)	10
Mains Cable No. Cores	3
Max Pipe Length (m)	20
Max Height Difference (m)	12
Charge R410A (kg) - (pre charged length)	1.1 (7)

DIMENSIONS

MFZ-KJ25VE



DIMENSIONS

MUFZ-KJ25VE

