

Air Conditioning

Product Information

MFZ-KJ50VE : Inverter Heat Pump

R410A Floor Mounted System



This series is extremely versatile and is designed for wall attached installation at floor level. The auto swing vane provides a more natural and comfortable airflow throughout the room and the lightweight, compact design makes installation easy.

FEATURES



INDOOR

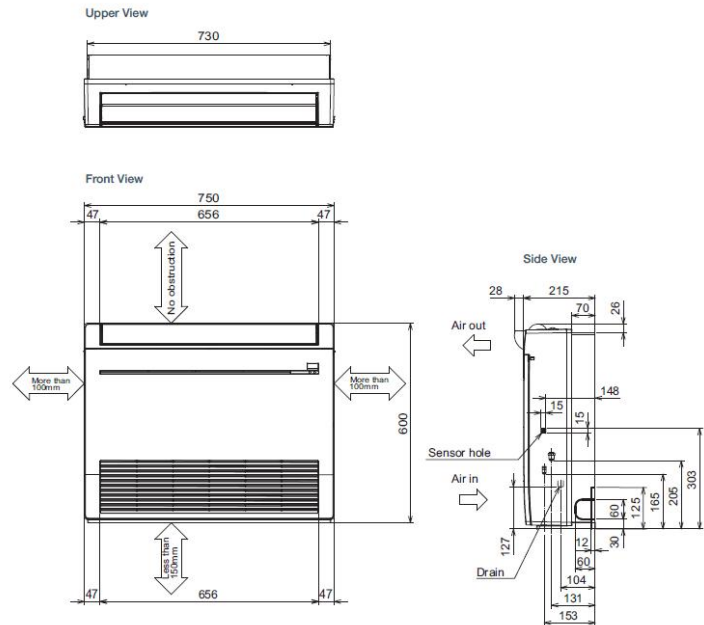
Heating Capacity (kW) (nominal)	6 (2.2 - 8.2)
Cooling Capacity (kW) (nominal)	4.8 (1.6 - 5.7)
Heating Capacity (kW) (UK)	4.98 (1.82 - 6.81)
Cooling Capacity (kW) (UK)	4.75 (1.58 - 5.65)
SHF (nominal and UK)	0.63
COP / EER (nominal)	3.73 / 3.55
SCOP / SEER	4.3 / 6.5
Energy Label (nominal)	A+ / A++
Airflow (m³/min) (Heating) - Lo-Mi-Hi-SupHi	6 - 7.4 - 9.4 - 14
Airflow (m³/min) (Cooling) - Lo-Mi-Hi-SupHi	5.6 - 6.7 - 8 - 10.6
Pipe Size Gas (mm [in])	12.7 (1/2")
Pipe Size Liquid (mm [in])	6.35 (1/4")
Sound Pressure Level (dBA) Heating - Lo-Mi-Hi-SupHi	32 - 35 - 39 - 44
Sound Pressure Level (dBA) Cooling - Lo-Mi-Hi-SupHi	29 - 35 - 40 - 50
Sound Power Level (dBA) Cooling	56
Dimensions (mm) Width x Depth x Height	750 x 215 x 600
Weight (kg)	15
Electrical Supply	FED BY OUTDOOR UNIT
Phase	SINGLE
Fuse Rating (BS88) - HRC (A)	6
Interconnecting Cable No. Cores	4

OUTDOOR

Sound Pressure Level (dBA) Heating / Cooling	51 / 49
Sound Power Level (dBA) Cooling	63
Weight (kg)	55
Dimensions (mm) Width x Depth x Height	840 x 330 x 880
Electrical Supply	220-240V, 50HZ
Phase	SINGLE
System Power Input (kW) - Heating / Cooling (nominal)	1.86 / 1.55
System Power Input (kW) - Heating / Cooling (UK)	1.46 / 1.13
Starting Current (A)	7.1
System Running Current (A) [MAX] - Heating / Cooling	7.1 / 6.2 [16.2]
Fuse Rating (BS88) - HRC (A)	20
Mains Cable No. Cores	3
Max Pipe Length (m)	30
Max Height Difference (m)	15
Charge R410A (kg) - (pre charged length)	1.5 (7)

DIMENSIONS

MFZ-KJ50VE



DIMENSIONS

MUFZ-KJ50VE

