

## INDOOR UNIT

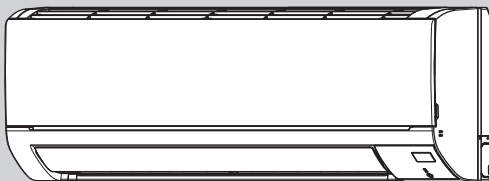
# PARTS CATALOG

No. OBB816

### Models

**MSY-TP35VF** - E1, ET1

**MSY-TP50VF** - E1, ET1



### CONTENTS

1. SERVICE PARTS LIST..... 2
2. OPTIONAL PARTS..... 6

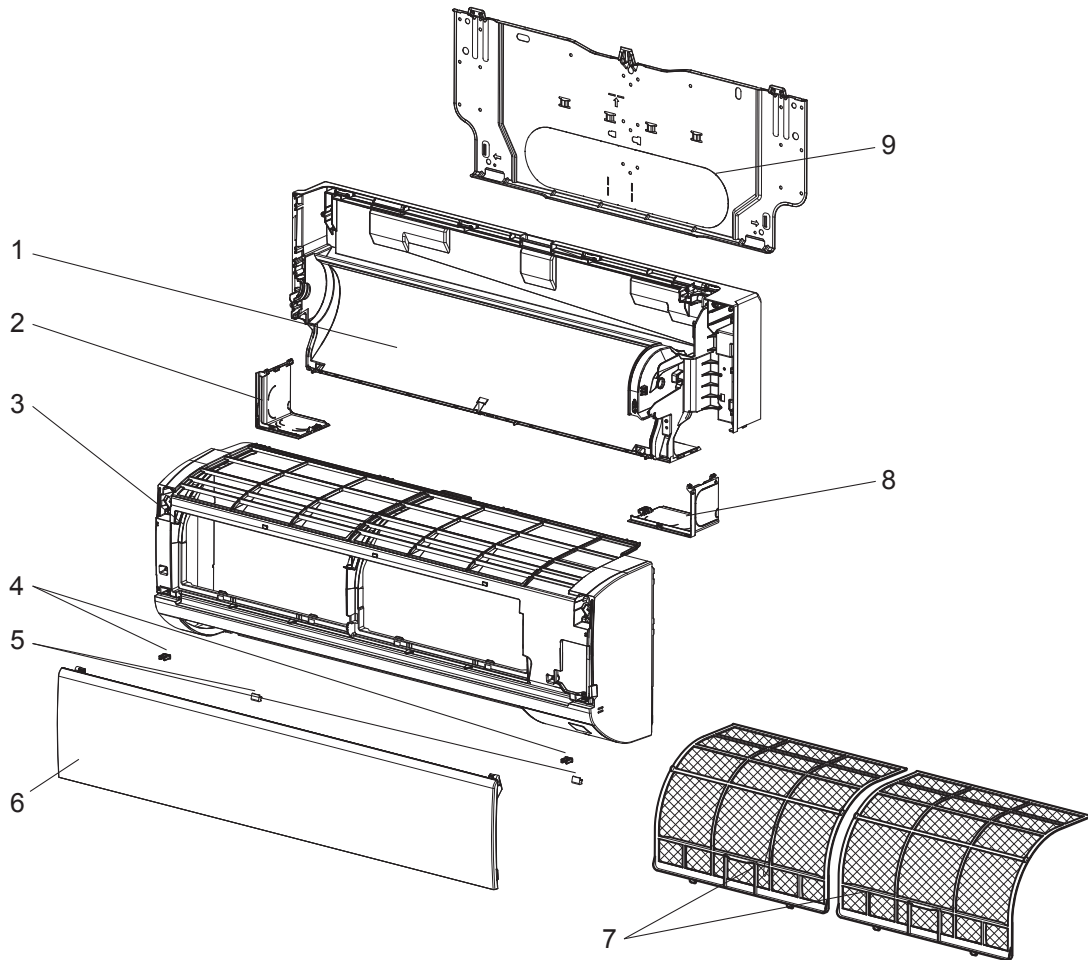
**SERVICE MANUAL (OBH816)**

# 1

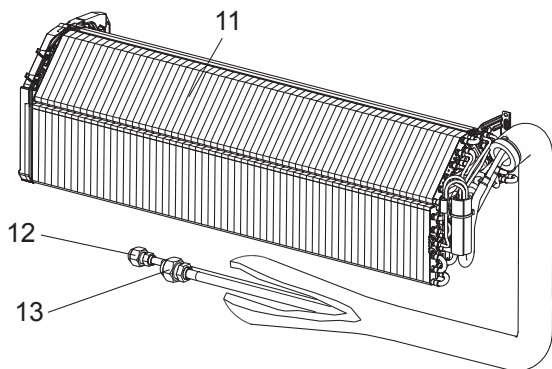
# SERVICE PARTS LIST

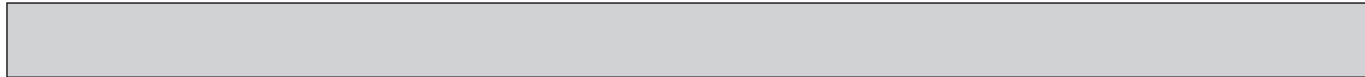
MSY-TP35VF MSY-TP50VF

## 1-1. INDOOR UNIT STRUCTURAL PARTS



## 1-2. INDOOR UNIT HEAT EXCHANGER





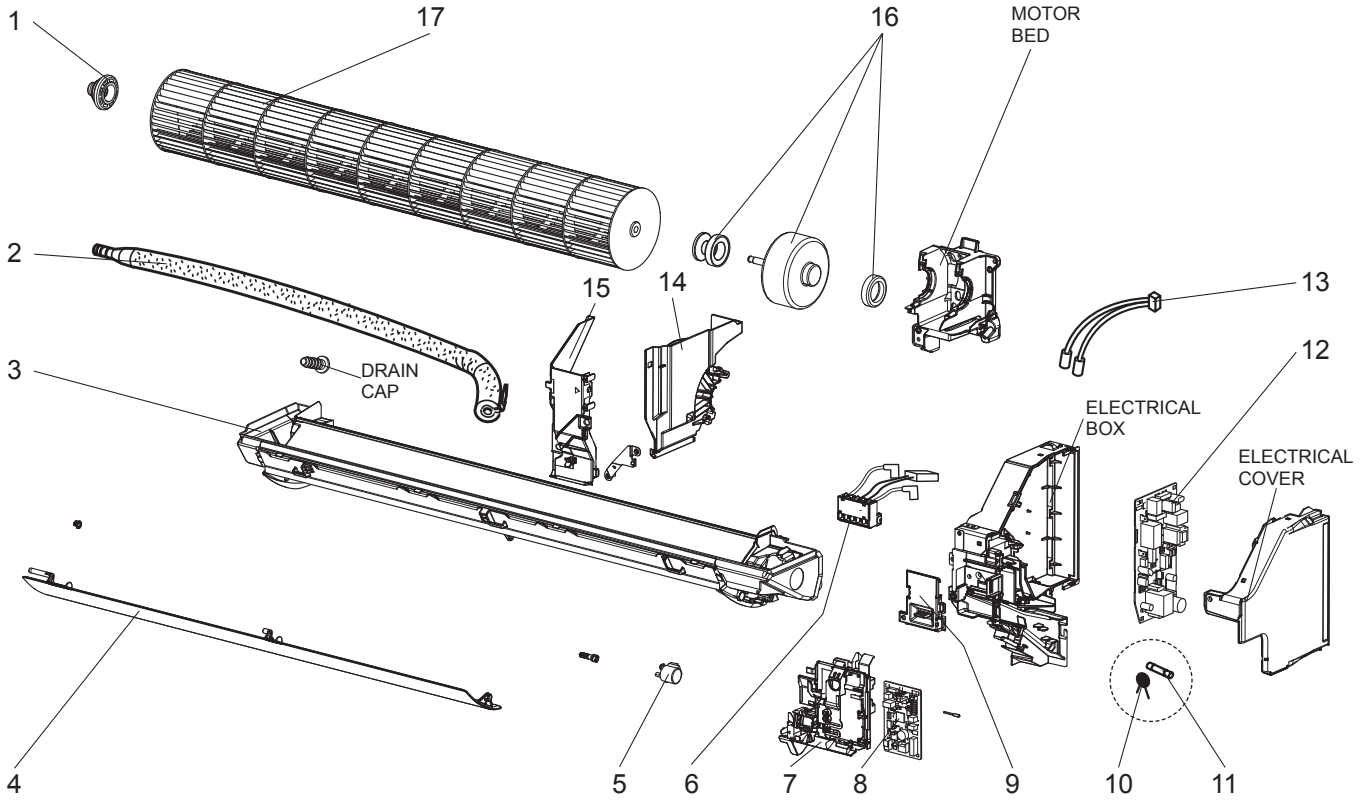
### 1-1. INDOOR UNIT STRUCTURAL PARTS

No.	Part No.	Part name	Symbol in Wiring Diagram	Q'ty/unit				Remarks
				MSY-TP				
				35VF -E1	35VF -ET1	50VF -E1	50VF -ET1	
1	E12 44C 234	BOX ASSEMBLY		1	1	1	1	
2	E12 98B 976	CORNER BOX LEFT		1	1	1	1	
3	E12 12F 000	PANEL ASSEMBLY		1	1	1	1	Including No. 4,5,6
4	E12 F95 142	CATCH		2	2	2	2	2 PCS/SET
5	E12 98B 067	SCREW CAP		2	2	2	2	2 PCS/SET
6	E12 12F 010	FRONT PANEL		1	1	1	1	
7	E12 N87 100	AIR FILTER		2	2	2	2	1 PC/SET
8	E12 98B 975	CORNER BOX RIGHT		1	1	1	1	
9	E12 N87 970	INSTALLATION PLATE		1	1	1	1	

### 1-2. INDOOR UNIT HEAT EXCHANGER

No.	Part No.	Part name	Symbol in Wiring Diagram	Q'ty/unit				Remarks
				MSY-TP				
				35VF -E1	35VF -ET1	50VF -E1	50VF -ET1	
11	E12 R84 620	INDOOR HEAT EXCHANGER		1	1	1	1	
12	E12 151 667	UNION (LIQUID)		1	1	1	1	ø6.35
13	E12 151 666	UNION (GAS)		1	1	1	1	ø9.52

**MSY-TP35VF MSY-TP50VF**  
**1-3. INDOOR UNIT ELECTRICAL PARTS AND FUNCTIONAL PARTS**



### 1-3. INDOOR UNIT ELECTRICAL PARTS AND FUNCTIONAL PARTS

No.	Part No.	Part name	Symbol in Wiring Diagram	Q'ty/unit				Remarks
				MSY-TP				
				35VF -E1	35VF -ET1	50VF -E1	50VF -ET1	
1	E12 A89 509	BEARING MOUNT ASSEMBLY		1	1	1	1	Including sleeve bearing
2	E12 P72 702	DRAIN HOSE		1	1	1	1	
3	E12 98B 235	NOZZLE ASSEMBLY		1	1	1	1	
4	E12 98B 040	HORIZONTAL VANE		1	1	1	1	
5	E12 N87 303	VANE MOTOR	MV	1	1	1	1	UP & DOWN, 1 PC/SET
6	E12 N87 375	TERMINAL BLOCK ASSEMBLY ※2	TB	1	1	1	1	
7	E12 N87 095	CONTROL P.C. BOARD HOLDER ASSEMBLY		1	1	1	1	
8	E12 12F 452	ELECTRONIC CONTROL P.C. BOARD ※1		1	1			
	E12 13F 452				1	1		
9	E12 N87 784	V.A. CLAMP		1	1	1	1	
10	E12 B75 385	VARISTOR	NR11	1	1	1	1	
11	E12 A49 382	FUSE	F11	1	1	1	1	T3.15AL250V
12	E12 12F 440	POWER P.C. BOARD		1	1	1	1	
13	E12 R84 307	INDOOR COIL THERMISTOR	RT12,RT13	1	1	1	1	
14	E12 N87 333	MOTOR BAND		1	1	1	1	
15	E12 N87 541	WATER COVER		1	1	1	1	
16	E12 J44 300	INDOOR FAN MOTOR ※3	MF	1	1	1	1	RC0J30-□□
17	E12 N87 302	LINE FLOW FAN		1	1	1	1	

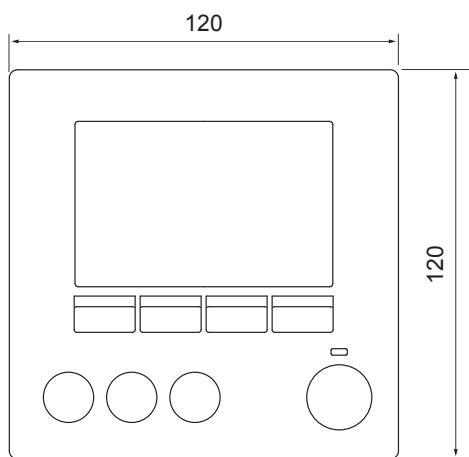
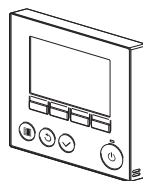
※1 Including ROOM TEMPERATURE THERMISTOR (RT11)

※2 Including THERMAL FUSE (F12)

※3 Including FAN MOTOR RUBBER MOUNT (2 PCS/SET)

## 2-1. WIRED REMOTE CONTROLLER HOLDER

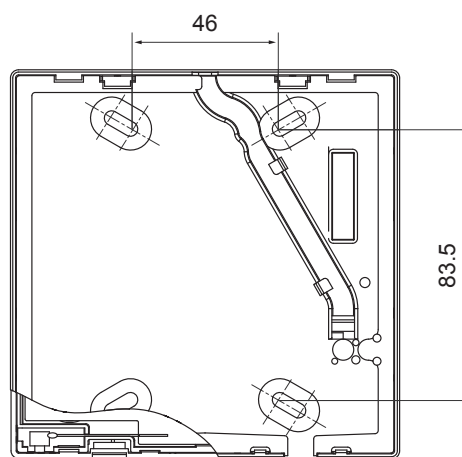
Model	Part No.
MSY-TP35VF MSY-TP50VF	PAR-33MAA



(Front view)



(Side view)



(Rear view)

Refer to the installation manual for the remote controller

# MITSUBISHI ELECTRIC CORPORATION

HEAD OFFICE: TOKYO BUILDING, 2-7-3, MARUNOUCHI, CHIYODA-KU, TOKYO 100-8310, JAPAN

© Copyright 2018 MITSUBISHI ELECTRIC CORPORATION  
Published: Oct. 2018. No. OBB816  
Made in Japan

Specifications are subject to change without notice.