

# SERVICE MANUAL

## Series PCA Ceiling Suspended R410A

Indoor unit  
[Model names]

[Service Ref.]

PCA-RP50KA

**PCA-RP50KA**

PCA-RP60KA

**PCA-RP60KA**

PCA-RP71KA

**PCA-RP71KA**

PCA-RP100KA

**PCA-RP100KA**

PCA-RP125KA

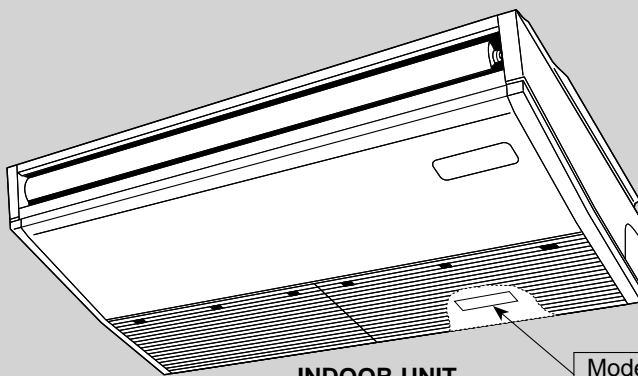
**PCA-RP125KA**

PCA-RP140KA

**PCA-RP140KA**

NOTE:

- RoHS compliant products have <G> mark on the spec name plate.

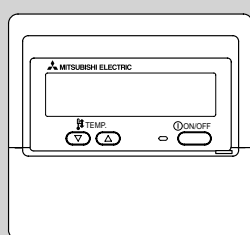


Model name  
indication

### CONTENTS

1. RoHS PARTS LIST .....2

**SERVICE MANUAL (OCH454)**



REMOTE CONTROLLER

**Mr. SLIM™**

## STRUCTURAL AND FUNCTIONAL PARTS (1)

PCA-RP50KA

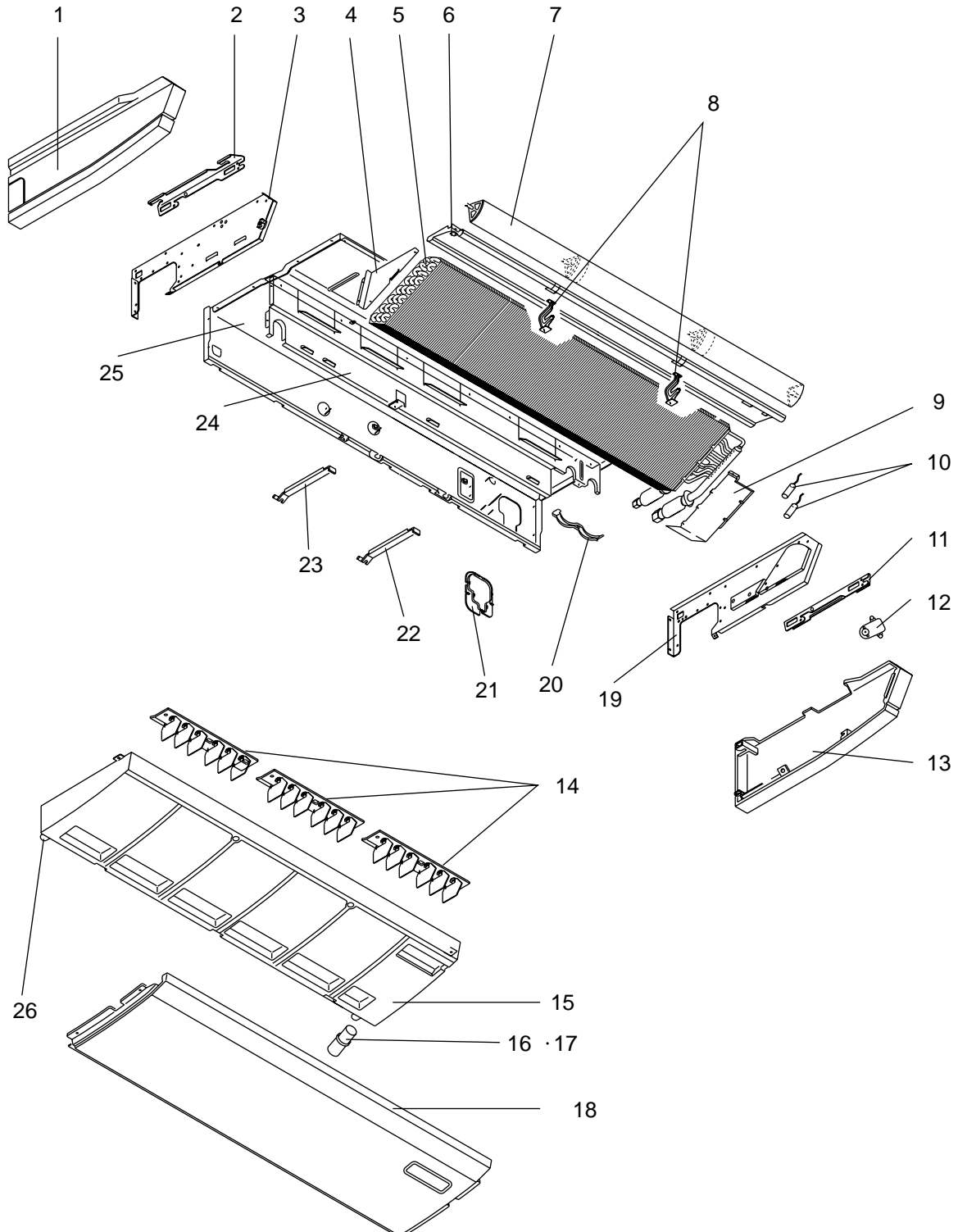
PCA-RP100KA

PCA-RP60KA

PCA-RP125KA

PCA-RP71KA

PCA-RP140KA





| No. | R/HS | Part No.    | Part Name         | Specification              | Q'ty/set  |    |    |     |     |     | Remarks<br>(Drawing No.) | Wiring<br>Diagram<br>Symbol | Recom-<br>mended<br>Q'ty |
|-----|------|-------------|-------------------|----------------------------|-----------|----|----|-----|-----|-----|--------------------------|-----------------------------|--------------------------|
|     |      |             |                   |                            | PCA-RP-KA |    |    |     |     |     |                          |                             |                          |
|     |      |             |                   |                            | 50        | 60 | 71 | 100 | 125 | 140 |                          |                             |                          |
| 1   | G    | R01 E26 662 | SIDE PANEL-L      |                            | 1         | 1  | 1  | 1   | 1   | 1   |                          |                             |                          |
| 2   | G    | R01 E06 809 | LEG-L             |                            | 1         | 1  | 1  | 1   | 1   | 1   |                          |                             |                          |
| 3   | G    | R01 E02 666 | SIDE PLATE-L      |                            | 1         | 1  | 1  | 1   | 1   | 1   |                          |                             |                          |
| 4   | G    | R01 E05 615 | COIL SUPPORT-H    |                            | 1         | 1  | 1  | 1   | 1   |     |                          |                             |                          |
|     | G    | R01 E06 615 | COIL SUPPORT-H    |                            |           |    |    |     |     | 1   |                          |                             |                          |
| 5   | G    | T7W N06 480 | HEAT EXCHANGER    |                            | 1         |    |    |     |     |     |                          |                             |                          |
|     | G    | T7W N07 480 | HEAT EXCHANGER    |                            |           | 1  |    |     |     |     |                          |                             |                          |
|     | G    | R01 N50 480 | HEAT EXCHANGER    |                            |           |    | 1  |     |     |     |                          |                             |                          |
|     | G    | R01 N51 480 | HEAT EXCHANGER    |                            |           |    |    | 1   |     |     |                          |                             |                          |
|     | G    | R01 N52 480 | HEAT EXCHANGER    |                            |           |    |    |     | 1   |     |                          |                             |                          |
| 6   | G    | R01 N53 480 | HEAT EXCHANGER    |                            |           |    |    |     |     | 1   |                          |                             |                          |
|     | G    | R01 E12 651 | FRONT PANEL       |                            | 1         |    |    |     |     |     |                          |                             |                          |
|     | G    | R01 E13 651 | FRONT PANEL       |                            |           | 1  | 1  |     |     |     |                          |                             |                          |
| 7   | G    | R01 E14 651 | FRONT PANEL       |                            |           |    |    | 1   | 1   | 1   |                          |                             |                          |
|     | G    | R01 E28 002 | AUTO VANE         |                            | 1         |    |    |     |     |     |                          |                             |                          |
|     | G    | R01 E29 002 | AUTO VANE         |                            |           | 1  | 1  |     |     |     |                          |                             |                          |
| 8   | G    | R01 E30 002 | AUTO VANE         |                            |           |    |    | 1   | 1   | 1   |                          |                             |                          |
|     | G    | R01 E04 033 | VANE SUPPORT      |                            | 1         | 2  | 2  | 2   | 2   | 2   |                          |                             |                          |
| 9   | G    | R01 E04 615 | COIL SUPPORT      |                            | 1         | 1  | 1  | 1   | 1   | 1   |                          |                             |                          |
| 10  | G    | T7W E61 202 | THERMISTOR (PIPE) |                            | 1         | 1  | 1  | 1   | 1   | 1   |                          | TH2/TH5                     |                          |
| 11  | G    | R01 E06 808 | LEG-R             |                            | 1         | 1  | 1  | 1   | 1   | 1   |                          |                             |                          |
| 12  | G    | R01 E25 223 | VANE MOTOR ASSY   |                            | 1         | 1  | 1  | 1   | 1   | 1   |                          | MV                          |                          |
| 13  | G    | R01 E45 661 | SIDE PANEL-R      |                            | 1         | 1  | 1  | 1   | 1   | 1   |                          |                             |                          |
| 14  | G    | R01 E03 085 | GUIDE VANE        |                            | 2         | 3  | 3  | 3   |     |     |                          |                             |                          |
|     | G    | R01 E04 085 | GUIDE VANE        |                            |           |    |    |     | 3   | 3   |                          |                             |                          |
| 15  | G    | R01 E42 529 | DRAIN PAN         |                            | 1         |    |    |     |     |     |                          |                             |                          |
|     | G    | R01 E43 529 | DRAIN PAN         |                            |           | 1  | 1  |     |     |     |                          |                             |                          |
|     | G    | R01 E44 529 | DRAIN PAN         |                            |           |    |    | 1   | 1   | 1   |                          |                             |                          |
| 16  | G    | R01 18J 523 | JOINT SOCKET      |                            | 1         | 1  | 1  | 1   | 1   | 1   |                          |                             |                          |
| 17  | G    | R01 18J 072 | DRAIN HOSE COVER  |                            | 1         | 1  | 1  | 1   | 1   | 1   |                          |                             |                          |
| 18  | G    | R01 E03 669 | UNDER PANEL       |                            | 1         |    |    |     |     |     |                          |                             |                          |
|     | G    | R01 E04 669 | UNDER PANEL       |                            |           | 1  | 1  |     |     |     |                          |                             |                          |
|     | G    | R01 E05 669 | UNDER PANEL       |                            |           |    |    | 1   | 1   | 1   |                          |                             |                          |
| 19  | G    | R01 E02 665 | SIDE PLATE-R      |                            | 1         | 1  | 1  | 1   | 1   | 1   |                          |                             |                          |
| 20  | G    | R01 E02 126 | PIPE BAND         |                            | 1         | 1  | 1  | 1   | 1   | 1   |                          |                             |                          |
| 21  | G    | R01 E00 053 | PIPE HOLE COVER   |                            | 1         | 1  | 1  | 1   | 1   | 1   |                          |                             |                          |
| 22  | G    | -           | BEAM              |                            | 1         | 1  | 1  | 1   | 1   | 1   | (RG00D440G02)            |                             |                          |
| 23  | G    | -           | BEAM              |                            |           | 1  | 1  | 1   | 1   | 1   | (BH02G431G10)            |                             |                          |
| 24  | G    | -           | FAN PLATE         |                            | 1         |    |    |     |     |     | (RG00V683G56)            |                             |                          |
|     | G    | -           | FAN PLATE         |                            |           | 1  | 1  |     |     |     | (RG00V683G57)            |                             |                          |
|     | G    | -           | FAN PLATE         |                            |           |    |    | 1   | 1   | 1   | (RG00V683G61)            |                             |                          |
| 25  | G    | -           | BASE              | Including<br>REAR<br>PANEL | 1         |    |    |     |     |     | (RG00V682G48)            |                             |                          |
|     | G    | -           | BASE              |                            |           | 1  | 1  |     |     |     | (RG00V682G49)            |                             |                          |
|     | G    | -           | BASE              |                            |           |    |    | 1   | 1   | 1   | (RG00V682G43)            |                             |                          |
| 26  | G    | R01 18J 524 | DRAIN PLUG        |                            | 1         | 1  | 1  | 1   | 1   | 1   |                          |                             |                          |

## STRUCTURAL AND FUNCTIONAL PARTS (2)

PCA-RP50KA

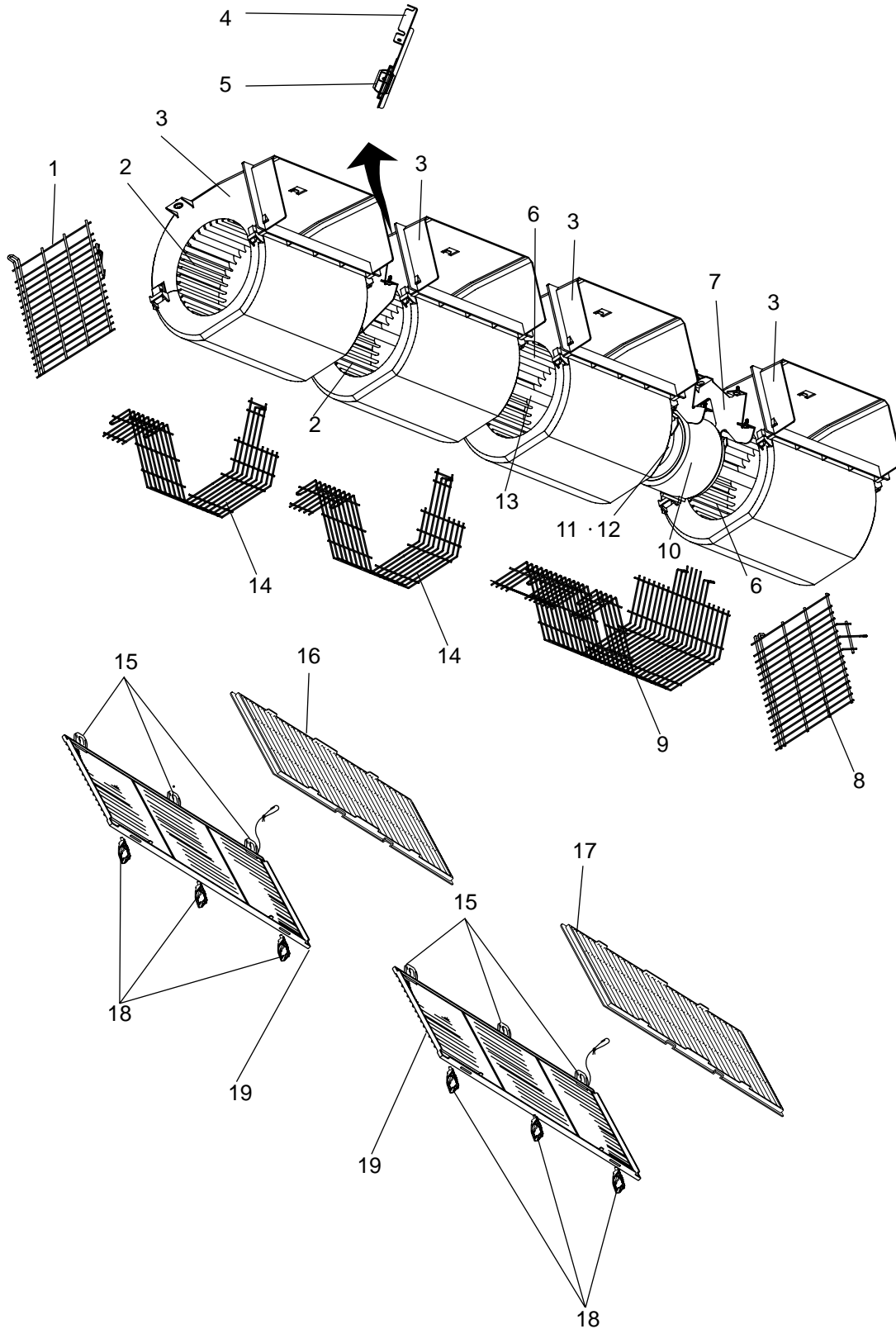
PCA-RP100KA

PCA-RP60KA

PCA-RP125KA

PCA-RP71KA

PCA-RP140KA





| No. | RoHS | Part No.    | Part Name         | Specification | Q'ty/set  |        |             | Remarks<br>(Drawing No.) | Wiring<br>Diagram<br>Symbol | Recom-<br>mended<br>Q'ty |
|-----|------|-------------|-------------------|---------------|-----------|--------|-------------|--------------------------|-----------------------------|--------------------------|
|     |      |             |                   |               | PCA-RP-KA |        |             |                          |                             |                          |
|     |      |             |                   |               | 50        | 60, 71 | 100,125,140 |                          |                             |                          |
| 1   | G    | T7W E20 675 | FAN GUARD-L       |               | 1         | 1      | 1           |                          |                             |                          |
| 2   | G    | R01 E41 114 | SIROCCO FAN       |               |           |        | 2           |                          |                             |                          |
| 3   | G    | R01 20J 110 | CASING            |               | 2         | 3      | 4           |                          |                             |                          |
| 4   | G    | R01 E00 145 | BEARING SUPPORT   |               |           | 1      | 1           |                          |                             |                          |
| 5   | G    | R01 E05 103 | BEARING           |               |           | 1      | 1           |                          |                             |                          |
| 6   | G    | R01 E40 114 | SIROCCO FAN       |               | 2         | 3      | 2           |                          |                             |                          |
| 7   | G    | T7W E16 130 | MOTOR LEG         |               | 1         | 1      | 1           |                          |                             |                          |
| 8   | G    | T7W E21 675 | FAN GUARD-R       |               | 1         | 1      | 1           |                          |                             |                          |
| 9   | G    | T7W E22 675 | FAN GUARD         |               | 1         |        |             |                          |                             |                          |
|     | G    | T7W E23 675 | FAN GUARD         |               |           | 1      | 1           |                          |                             |                          |
| 10  | G    | T7W E38 762 | FAN MOTOR         |               | 1         |        |             |                          | MF                          |                          |
|     | G    | T7W E39 762 | FAN MOTOR         |               |           | 1      |             |                          | MF                          |                          |
|     | G    | T7W E40 762 | FAN MOTOR         |               |           |        | 1           |                          | MF                          |                          |
| 11  | G    | T7W E02 126 | PIECE (MOTOR) R.L |               | 1         | 1      | 1           |                          |                             |                          |
| 12  | G    | R01 E00 116 | JOINT(SHAFT)      |               |           | 1      | 1           |                          |                             |                          |
| 13  | G    | R01 31J 100 | SHAFT             |               |           | 1      |             |                          |                             |                          |
|     | G    | R01 32J 100 | SHAFT             |               |           |        | 1           |                          |                             |                          |
| 14  | G    | T7W E24 675 | FAN GUARD         |               |           | 1      |             |                          |                             |                          |
|     | G    | T7W E25 675 | FAN GUARD         |               |           |        | 2           |                          |                             |                          |
| 15  | G    | R01 E04 061 | GRILLE HINGE      |               | 4         | 5      | 6           |                          |                             |                          |
| 16  | G    | R01 E24 500 | AIR FILTER        |               | 2         | 1      |             |                          |                             |                          |
| 17  | G    | R01 E25 500 | AIR FILTER        |               |           | 1      | 2           |                          |                             |                          |
| 18  | G    | R01 E11 054 | GRILLE CATCH      |               | 4         | 5      | 6           |                          |                             |                          |
| 19  | G    | R01 E54 691 | GRILLE (SMALL)    |               | 2         | 1      |             |                          |                             |                          |
|     | G    | R01 E55 691 | GRILLE (LARGE)    |               |           | 1      | 2           |                          |                             |                          |

## ELECTRICAL PARTS

PCA-RP50KA

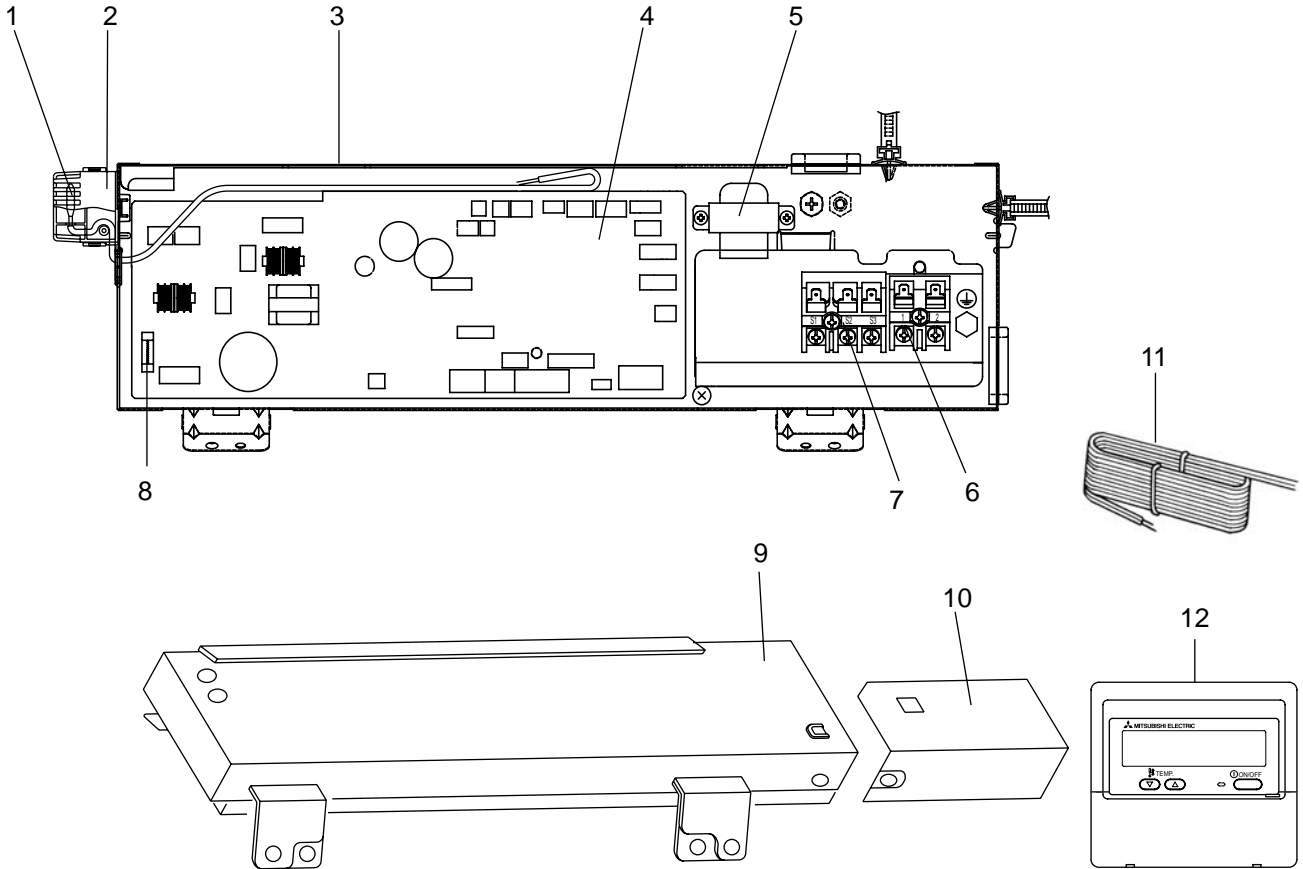
PCA-RP100KA

PCA-RP60KA

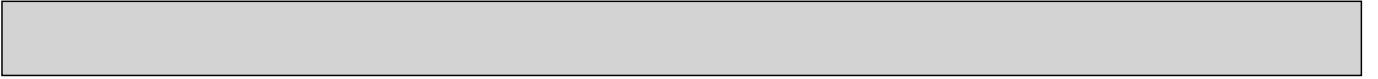
PCA-RP125KA

PCA-RP71KA

PCA-RP140KA



| No. | RoHS | Part No.    | Part Name              | Specification   | Q'ty/set  |                           | Remarks<br>(Drawing No.) | Wiring<br>Diagram<br>Symbol | Recom-<br>mended<br>Q'ty |
|-----|------|-------------|------------------------|-----------------|-----------|---------------------------|--------------------------|-----------------------------|--------------------------|
|     |      |             |                        |                 | PCA-RP-KA | 50, 60, 71, 100, 125, 140 |                          |                             |                          |
| 1   | G    | R01 N18 202 | THERMISTOR (ROOM)      |                 | 1         |                           |                          | TH1                         |                          |
| 2   | G    | -           | SENSOR COVER           |                 | 1         |                           | (RG25V835G02)            |                             |                          |
| 3   | G    | -           | ELECTRICAL BOX         |                 | 1         |                           | (BH00G997G19)            |                             |                          |
| 4   | G    | T7W E88 310 | CONTROLLER BOARD       |                 | 1         |                           |                          | I.B.                        |                          |
| 5   | G    | T7W E19 259 | REACTOR                |                 | 1         |                           |                          | DCL                         |                          |
| 6   | G    | T7W E33 716 | TERMINAL BLOCK         | 2P (1,2)        | 1         |                           |                          | TB5                         |                          |
| 7   | G    | R01 E20 246 | TERMINAL BLOCK         | 3P (S1, S2, S3) | 1         |                           |                          | TB4                         |                          |
| 8   | G    | R01 E14 239 | FUSE                   | 6.3A 250V       | 1         |                           |                          | FUSE                        |                          |
| 9   | G    | -           | ELECTRICAL BOX COVER   |                 | 1         |                           | (BH00L420G16)            |                             |                          |
| 10  | G    | -           | ELECTRICAL BOX COVER   |                 | 1         |                           | (RG02V755G02)            |                             |                          |
| 11  | G    | T7W E05 305 | REMOTE CONTROLLER CORD |                 | 1         |                           |                          |                             |                          |
| 12  | G    | T7W E11 713 | REMOTE CONTROLLER      | PAR-21MAA       | 1         |                           |                          | R.B                         |                          |



Mr. SLIM™

 **mitsubishi electric corporation**

HEAD OFFICE : TOKYO BLDG., 2-7-3, MARUNOUCHI, CHIYODA-KU, TOKYO 100-8310, JAPAN