

# Air Conditioning

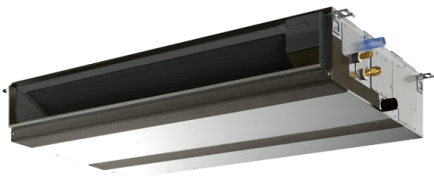
## Product Information

### PEAD-RP100JAQ : Standard Inverter Heat Pump

R410A Ceiling Concealed Ducted System



Our Standard Inverter range offers customers all the features and benefits of inverter technology whilst being cost effective..



## FEATURES



### INDOOR

|  |                          |
|--|--------------------------|
| Heating Capacity (kW) (nominal)                | 11.2 (4.5 - 12.5)        |
| Cooling Capacity (kW) (nominal)                | 9.4 (4.9 - 11.2)         |
| Heating Capacity (kW) (UK)                     | 9.5 (3.85 - 10.65)       |
| Cooling Capacity (kW) (UK)                     | 8.65 (4.5 - 10.3)        |
| SHF (nominal and UK)                           | 0.85                     |
| COP / EER (nominal)                            | 3.61 / 3.01              |
| SCOP / SEER                                    | 3.8 / 4.6                |
| Energy Efficiency Class - Heating / Cooling    | A / B                    |
| Airflow (m <sup>3</sup> /min) Lo-Mi-Hi         | 24 - 29 - 34             |
| Pipe Size Gas (mm [in])                        | 15.88 (5/8")             |
| Pipe Size Liquid (mm [in])                     | 9.52 (3/8")              |
| External Static Pressure (Pa) Lo-Mi-Mi2-Mi3-Hi | 35 - 50 - 70 - 100 - 150 |
| Sound Pressure Level (dBA) Lo-Mi-Hi            | 29 - 34 - 38             |
| Sound Power Level (dBA) Cooling                | 61                       |
| Dimensions (mm) Width x Depth x Height         | 1400 x 732 x 250         |
| Weight (kg)                                    | 41                       |
| Electrical Supply                              | FED BY OUTDOOR UNIT      |
| Phase  | SINGLE                   |
| Fuse Rating (BS88) - HRC (A)                   | 6                        |
| Interconnecting Cable No. Cores                | 4                        |

### OUTDOOR

|   |                      |
|---|----------------------|
| Sound Pressure Level (dBA) Heating / Cooling          | 54 / 50              |
| Sound Power Level (dBA) Cooling                       | 70                   |
| Weight (kg)   | 77                   |
| Dimensions (mm) Width x Depth x Height                | 950 x (330+30) x 943 |
| Electrical Supply                                     | 380-415V,50HZ        |
| Phase   | THREE                |
| System Power Input (kW) - Heating / Cooling (nominal) | 3.10 / 3.12          |
| System Power Input (kW) - Heating / Cooling (UK)      | 2.76 / 2.65          |
| Starting Current (A)                                  | 4                    |
| System Running Current (A) [MAX] - Heating / Cooling  | 6.83 / 6.68 [15.7]   |
| Fuse Rating (BS88) - HRC (A)                          | 16                   |
| Mains Cable No. Cores                                 | 5                    |
| Max Pipe Length (m)                                   | 50                   |
| Max Height Difference (m)                             | 30                   |
| Charge R410A (kg) - Pre charged length (m)            | 3 - 30               |

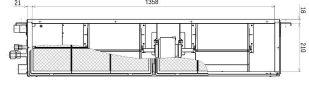
### DIMENSIONS

PEAD-RP100JQA

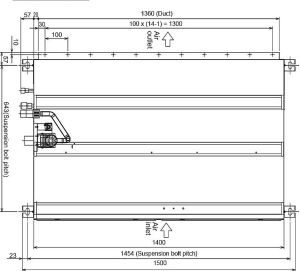
Front View >



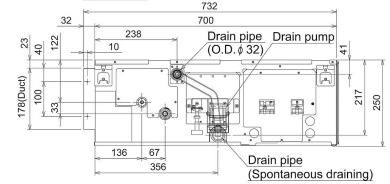
Rear View >



Upper View >



Side View >



### DIMENSIONS

PUHZ-P100YHA2

