

Air Conditioning

Product Information

PEAD-RP100JAQ (Three Phase)
Power Inverter Heat Pump
Ceiling Concealed Ducted System

Making a
World of
Difference

Mr.SLIM™



Our wide range of Power Inverters offer customers high seasonal efficiency, advanced control options and quiet operation, whilst providing greater flexibility and ease of installation.

Key Features

- Reduced height - entire range only 250mm
- Wider range of external static pressure settings across entire range
- Drain pump included as standard



Air Conditioning | Heating
Ventilation | Controls



Air Conditioning

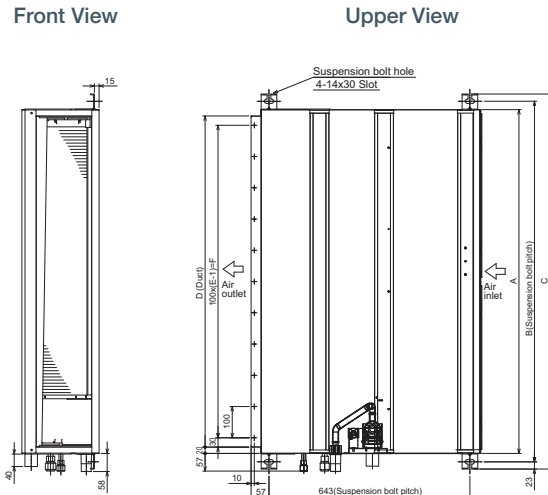
Product Information

PEAD-RP100JAQ (Three Phase)
Power Inverter Heat Pump
Ceiling Concealed Ducted System

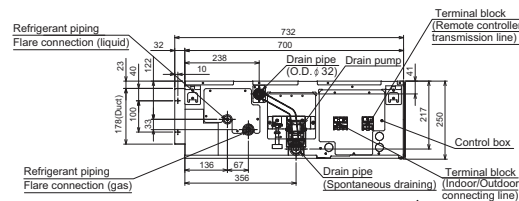
Making a
 World of
 Difference

PEAD-RP - INDOOR UNITS		PEAD-RP100JAQ
CAPACITY (kW)	Heating (nominal)	11.2 (4.5-14.0)
	Cooling (nominal)	9.5 (4.9-11.4)
	Heating (UK)	9.5 (3.85-11.9)
	Cooling (UK)	9.2 (4.5-10.5)
SHF (nominal & UK)		0.82
COP / EER (nominal)		4.31 / 3.91
SCOP / SEER (BS EN14825)		4.2 / 5.5
EP ENERGY EFFICIENCY CLASS	Heating/Cooling	A+ / A
AIRFLOW (l/s)	Lo-Mi-Hi	400-483-567
PIPE SIZE mm (in)	Gas	15.88 (5/8")
	Liquid	9.52 (3/8")
EXTERNAL STATIC PRESSURE (Pa)		35-50-70-100-150
SOUND PRESSURE LEVEL (dBA)	Lo-Mi-Hi	29-34-38
SOUND POWER LEVEL (dBA)		61
DIMENSIONS (mm) Width x Depth x Height		1400 x 732 x 250
WEIGHT (kg)		41
ELECTRICAL SUPPLY		Fed by Outdoor Unit
FUSE RATING (BS88) - HRC (A)		6
INTERCONNECTING CABLE No. Cores		4

DIMENSIONS

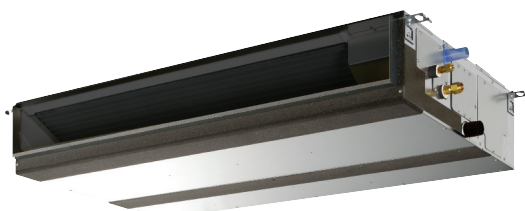


Side View



PUHZ-ZRP - OUTDOOR UNITS		PUHZ-ZRP100YKA2 ³
Three Phase		
SOUND PRESSURE LEVEL (dBA)	Heating/Cooling	51 / 49
SOUND POWER LEVEL (dBA)	Heating/Cooling	69
WEIGHT (kg)		123
DIMENSIONS (mm) Width x Depth x Height		1050 x 330 x 40 x 1338
ELECTRICAL SUPPLY		380-415v, 50Hz
PHASE		Three
SYSTEM POWER	Heating/Cooling (nominal)	2.60 / 2.63
INPUT (kW)	Heating/Cooling (UK)	2.08 / 2.26
STARTING CURRENT (A)		4.0
SYSTEM RUNNING CURRENT (A) Heating/Cooling [MAX]		4.23 / 4.20 [10.7]
FUSE RATING (BS88) - HRC (A)		16
MAINS CABLE No. Cores		5
MAX PIPE LENGTH (m)		75
MAX HEIGHT DIFFERENCE (m)		30
CHARGE R410A (kg) - 30m		5.0

³ Three Phase



Model	A	B	C	D	E	F
PEAD-RP100JAQ	1400	1454	1500	1360	14	1300



Telephone: 01707 282880

email: air.conditioning@meuk.mee.com web: www.airconditioning.mitsubishielectric.co.uk

UNITED KINGDOM Mitsubishi Electric Europe Living Environmental Systems Division
 Travellers Lane, Hatfield, Hertfordshire, AL10 8XB, England General Enquiries Telephone: 01707 282880 Fax: 01707 278881

IRELAND Mitsubishi Electric Europe Westgate Business Park, Ballymount, Dublin 24, Ireland
 Telephone: Dublin (01) 419 8800 Fax: Dublin (01) 419 8890 International code: (003531)

Country of origin: United Kingdom - Japan - Thailand - Malaysia. ©Mitsubishi Electric Europe 2015. Mitsubishi and Mitsubishi Electric are trademarks of Mitsubishi Electric Europe B.V. The company reserves the right to make any variation in technical specification to the equipment described, or to withdraw or replace products without prior notification or public announcement. Mitsubishi Electric is constantly developing and improving its products. All descriptions, illustrations, drawings and specifications in this publication present only general particulars and shall not form part of any contract. All goods are supplied subject to the Company's General Conditions of Sale, a copy of which is available on request. Third-party product and brand names may be trademarks or registered trademarks of their respective owners.



Note: The fuse rating is for guidance only. Please refer to the relevant databook for detailed specification. It is the responsibility of a qualified electrician/electrical engineer to select the correct cable size and fuse rating based on current regulation and site specific conditions. Mitsubishi Electric's air conditioning and heat pump systems contain fluorinated greenhouse gases R410A, R407C and R134a.



www.greengateway.mitsubishielectric.co.uk

Mitsubishi Electric UK's commitment to the environment

Follow us @meuk_Jes
 Follow us @green_gateway

Mitsubishi Electric
 Living Environmental Systems UK

YouTube
 mitsubishielectric2

Effective as of April 2015