

# Air Conditioning

## Product Information

**PEAD-RP140JAQ** (Three Phase)  
**Power Inverter Heat Pump**  
Ceiling Concealed Ducted System

Making a  
World of  
Difference

Mr.SLIM™



Our wide range of Power Inverters offer customers high seasonal efficiency, advanced control options and quiet operation, whilst providing greater flexibility and ease of installation.

### Key Features

- Reduced height - entire range only 250mm
- Wider range of external static pressure settings across entire range
- Drain pump included as standard



Air Conditioning | Heating  
Ventilation | Controls



# Air Conditioning

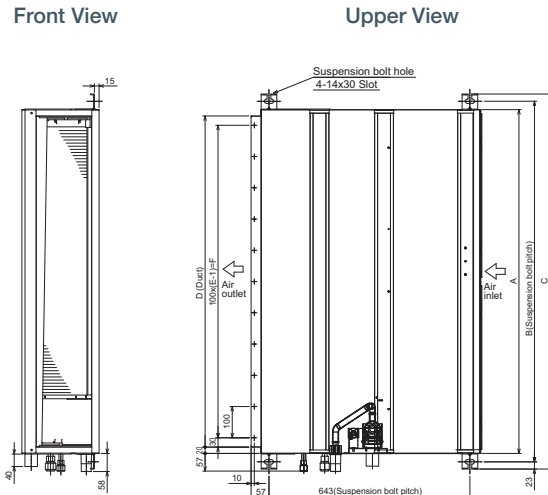
## Product Information

**PEAD-RP140JAQ (Three Phase)**  
**Power Inverter Heat Pump**  
 Ceiling Concealed Ducted System

Making a  
 World of  
 Difference

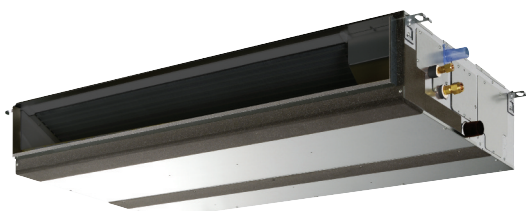
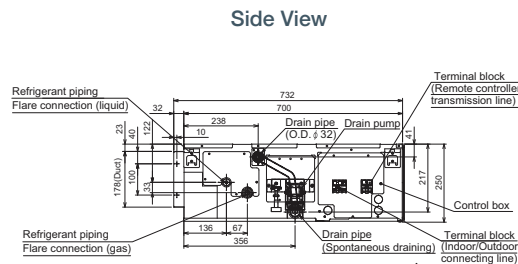
PEAD-RP - INDOOR UNITS		PEAD-RP140JAQ
CAPACITY (kW)	Heating (nominal)	16.0 (5.7-18.0)
	Cooling (nominal)	13.4 (6.2-15.3)
	Heating (UK)	13.6 (4.85-15.3)
	Cooling (UK)	12.3 (5.7-14.1)
SHF (nominal & UK)		0.84
COP / EER (nominal)		3.93 / 3.10
SCOP / SEER (BS EN14825)		4.0 / 4.7
EP ENERGY EFFICIENCY CLASS Heating/Cooling		N/A
AIRFLOW (l/s)	Lo-Mi-Hi	533-650-767
PIPE SIZE mm (in)	Gas	15.88 (5/8")
	Liquid	9.52 (3/8")
EXTERNAL STATIC PRESSURE (Pa)		35-50-70-100-150
SOUND PRESSURE LEVEL (dBA)	Lo-Mi-Hi	34-38-43
SOUND POWER LEVEL (dBA)		66
DIMENSIONS (mm) Width x Depth x Height		1600 x 732 x 250
WEIGHT (kg)		47
ELECTRICAL SUPPLY		Fed by Outdoor Unit
FUSE RATING (BS88) - HRC (A)		6
INTERCONNECTING CABLE No. Cores		4

## DIMENSIONS



PUHZ-ZRP - OUTDOOR UNITS		PUHZ-ZRP140YKA2 <sup>3</sup>
Three Phase		
SOUND PRESSURE LEVEL (dBA)	Heating/Cooling	52 / 50
SOUND POWER LEVEL (dBA)	Heating/Cooling	70
WEIGHT (kg)		131
DIMENSIONS (mm) Width x Depth x Height		1050 x 330 + 40 x 1338
ELECTRICAL SUPPLY		380-415v, 50Hz
PHASE		Three
SYSTEM POWER	Heating/Cooling (nominal)	3.81 / 4.36
INPUT (kW)	Heating/Cooling (UK)	3.04 / 3.74
STARTING CURRENT (A)		4.0
SYSTEM RUNNING CURRENT (A)	Heating/Cooling [MAX]	7.59 / 7.06 [15.8]
FUSE RATING (BS88) - HRC (A)		16
MAINS CABLE No. Cores		5
MAX PIPE LENGTH (m)		75
MAX HEIGHT DIFFERENCE (m)		30
CHARGE R410A (kg) - 30m		5.0

<sup>3</sup> Three Phase



Model	A	B	C	D	E	F
PEAD-R140JAQ	1600	1654	1700	1560	16	1500



Telephone: 01707 282880  
 email: [air.conditioning@meuk.mee.com](mailto:air.conditioning@meuk.mee.com) web: [www.airconditioning.mitsubishielectric.co.uk](http://www.airconditioning.mitsubishielectric.co.uk)

UNITED KINGDOM Mitsubishi Electric Europe Living Environmental Systems Division  
 Travellers Lane, Hatfield, Hertfordshire, AL10 8XB, England General Enquiries Telephone: 01707 282880 Fax: 01707 278881  
 IRELAND Mitsubishi Electric Europe Westgate Business Park, Ballymount, Dublin 24, Ireland  
 Telephone: Dublin (01) 419 8800 Fax: Dublin (01) 419 8890 International code: (003531)

Country of origin: United Kingdom - Japan - Thailand - Malaysia. ©Mitsubishi Electric Europe 2015. Mitsubishi and Mitsubishi Electric are trademarks of Mitsubishi Electric Europe B.V. The company reserves the right to make any variation in technical specification to the equipment described, or to withdraw or replace products without prior notification or public announcement. Mitsubishi Electric is constantly developing and improving its products. All descriptions, illustrations, drawings and specifications in this publication present only general particulars and shall not form part of any contract. All goods are supplied subject to the Company's General Conditions of Sale, a copy of which is available on request. Third-party product and brand names may be trademarks or registered trademarks of their respective owners.



**Note:** The fuse rating is for guidance only. Please refer to the relevant databook for detailed specification. It is the responsibility of a qualified electrician/electrical engineer to select the correct cable size and fuse rating based on current regulation and site specific conditions. Mitsubishi Electric's air conditioning and heat pump systems contain fluorinated greenhouse gases R410A, R407C and R134a.



[www.greengateway.mitsubishielectric.co.uk](http://www.greengateway.mitsubishielectric.co.uk)  
 Mitsubishi Electric UK's commitment to the environment

Follow us @meuk\_Jes  
 Follow us @green\_gateway

Mitsubishi Electric  
 Living Environmental Systems UK

YouTube [mitsubishielectric2](https://www.youtube.com/mitsubishielectric2)

Effective as of April 2015