



# PLA-RP60BA

## Power Inverter Heat Pump

### R410A 4-Way Blow Ceiling Cassette System

Advanced inverter technology makes the Mr Slim Power Inverter the number one choice for improving comfort. They provide energy savings of up to 70% annually when compared to a previous non-inverter model. Operating noise has also been reduced thanks to improvements in fan design, while existing pipe work is reusable for easier maintenance and installation.

- **Airflow controllable for ceiling heights up to 4.2m, with automatic adjustment of fan speed**
- **Reduced draft air distribution, with independent vane control**
- **Filter lowering operation down to 4m (optional PLP-6BAJ grille required)**
- **Optional 'I See Sensor' for energy saving and smooth temperature control throughout the room**



Pictures not to scale

## Product Details

### PLA-RP60BA Indoor Unit

Capacity (kW):	
Heating (Nominal) (Low - High)	7.00 (2.80 - 8.20)
Cooling (Nominal) (Low - High)	6.00 (2.70 - 6.70)
Heating (UK) (Low - High)	5.95 (2.40 - 6.95)
Cooling (UK) (Low - High)	5.50 (2.50 - 6.15)
SHF R410A (Nominal)	0.76
COP / EER (Nominal)	3.85 / 3.75
Energy Label Heating / Cooling	A / A
Width - mm	840 (950)
Depth - mm	840 (950)
Height - mm	258 (35)
Weight - kg	23 (6)
Airflow (m3/min) - Lo-Mi1-Mi2-Hi	12-14-16-18
Noise (dBA) - Lo-Mi1-Mi2-Hi	28-29-31-32
Electrical Supply	Fed by Outdoor Unit
Phase	Single
Fuse Rating (BS88) - HRC (A)	6
Interconnecting Cable No. Cores	4

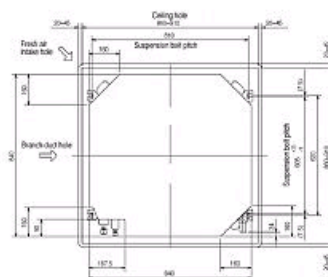
### PUHZ-RP60VHA4 Outdoor Unit

Width - mm	950
Depth - mm	330 + 30
Height - mm	943
Weight - kg	67
Noise (dBA) (Heating /Cooling) - Lo-Hi	44-48 /44-47
Electrical Supply	220-240v, 50Hz
Phase	Single
Fuse Rating (BS88) - HRC (A)	20
SystemPower Input (kW) - Heating (Nominal)	1.82
SystemPower Input (kW) - Cooling (Nominal)	1.6
SystemPower Input (kW) - Heating (UK)	1.62
SystemPower Input (kW) - Cooling (UK)	1.36
Starting Current (A)	5
SystemRunning Current (A) - Heating / Cooling	8.34 / 7.31
Mains Cable No. Cores	3
Max Pipe Length (m)	50
Max Height Difference (m)	30
Charge (kg) - 30m	3.5

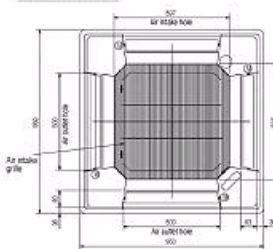
## Dimensions

### PLA-RP60BA

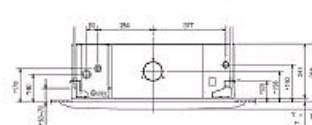
#### Upper View >



#### Front View >

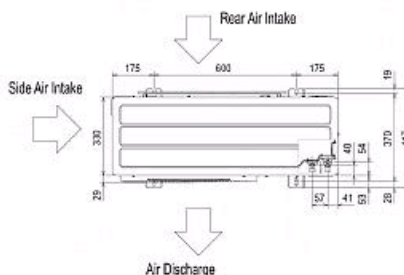


#### Side View >

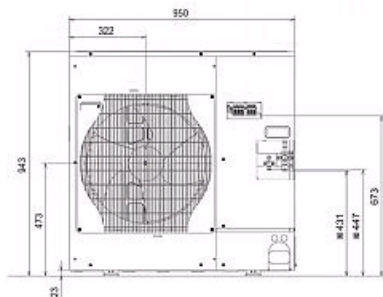


### PUHZ-RP60VHA4

#### Upper View >



#### Front View >



#### Right Side View >



Telephone: 01707 282880

Email: [air.conditioning@meuk.mee.com](mailto:air.conditioning@meuk.mee.com) Website: <http://www.mitsubishielectric.co.uk/aircon>

Tel:  
Fax:

Mitsubishi Electric reserves the right to make any variation in technical specification to the equipment described, or to withdraw or replace products without prior notification or public announcement.

