



# PLA-RP125BA2

Power Inverter Heat Pump

R410A High COP 4-Way Blow Ceiling Cassette System

Advanced inverter technology makes the Mr Slim Power Inverter the number one choice for improving comfort. They provide energy savings of up to 70% annually when compared to a previous non-inverter model. Operating noise has also been reduced thanks to improvements in fan design, while existing pipe work is reusable for easier maintenance and installation.

- **Airflow controllable for ceiling heights up to 4.2m, with automatic adjustment of fan speed**
- **Reduced draft air distribution, with independent vane control**
- **Filter lowering operation down to 4m (optional PLP-6BAJ grille required)**
- **Optional 'I See Sensor' for energy saving and smooth temperature control throughout the room**



Pictures not to scale

## Product Details

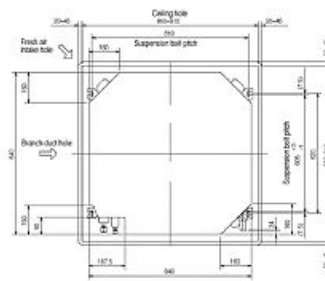
PLA-RP125BA2 Indoor Unit	
Capacity (kW):	
Heating (Nominal) (Low - High)	14.00 (5.00 - 16.00)
Cooling (Nominal) (Low - High)	12.50 (5.50 - 14.00)
Heating (UK) (Low - High)	11.90 (4.25 - 13.60)
Cooling (UK) (Low - High)	11.50 (5.05 - 12.90)
SHF R410A (Nominal)	0.71
COP / EER (Nominal)	4 / 3.41
Energy Label Heating / Cooling	A / A
Width (grille) - mm	840 (950)
Depth (grille) - mm	840 (950)
Height (grille) - mm	298 (35)
Weight (grille) - kg	27 (6)
Airflow (m3/min) - Lo-Mi1-Mi2-Hi	22-25-28-31
Noise (dBA) - Lo-Mi1-Mi2-Hi	34-36-39-41
Pipe Size Gas mm (in)	15.88 (5/8)
Pipe Size Liquid mm (in)	9.52 (3/8)
Electrical Supply	Fed by Outdoor Unit
Phase	Single
Fuse Rating (BS88) - HRC (A)	6
Interconnecting Cable No. Cores	4
Grille Ref	PLP-6BA GRILLE

PUHZ-RP125VKA Outdoor Unit	
Width - mm	1050
Depth - mm	330+30
Height - mm	1338
Weight - kg	116
Noise (dBA) (Heating /Cooling) - Lo-Hi	52 /47-50
Electrical Supply	220-240v, 50Hz
Phase	Single
Fuse Rating (BS88) - HRC (A)	32
SystemPower Input (kW) - Heating (Nominal)	3.5
SystemPower Input (kW) - Cooling (Nominal)	3.67
SystemPower Input (kW) - Heating (UK)	3.12
SystemPower Input (kW) - Cooling (UK)	3.12
Starting Current (A)	5
SystemRunning Current (A) - Heating / Cooling	16.02 / 16.73
Mains Cable No. Cores	3
Max Pipe Length (m)	75
Max Height Difference (m)	30
Charge (kg) - 30m	5

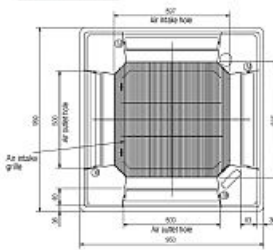
## Dimensions

### PLA-RP125BA2

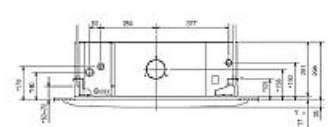
#### Upper View >



#### Front View >

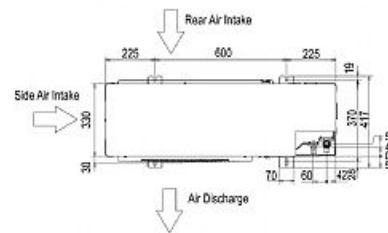


#### Side View >

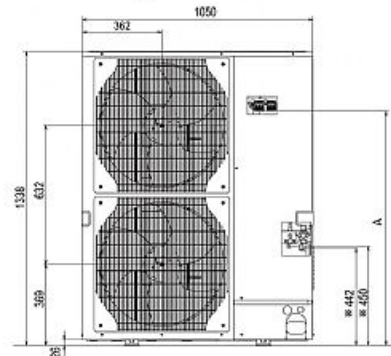


### PUHZ-RP125VKA

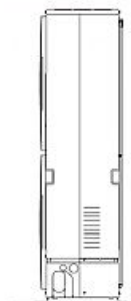
#### Upper View >



#### Front View >



#### Right Side View >



Telephone: 01707 282880

Email: [air.conditioning@meuk.mee.com](mailto:air.conditioning@meuk.mee.com) Website: <http://www.mitsubishielectric.co.uk/aircon>

Tel:  
Fax:



Mitsubishi Electric reserves the right to make any variation in technical specification to the equipment described, or to withdraw or replace products without prior notification or public announcement.