

Air Conditioning

Product Information

PLA-ZRP125BA (Single Phase)
Power Inverter Heat Pump
4-Way Blow Ceiling Cassette System

Making a
World of
Difference

mr.slim™



Our wide range of Power Inverters offer customers high seasonal efficiency, advanced control options and quiet operation, whilst providing greater flexibility and ease of installation.

Key Features

- Airflow controllable for ceiling heights up to 3.5m, with automatic adjustment of fan speed
- Reduced draft air distribution, with independent vane control
- Filter lowering operation down to 4m (optional PLP-6BAJ grille required)
- Optional 'i-see sensor' for energy saving and smooth temperature control throughout the room



Air Conditioning | Heating
Ventilation | Controls

Air Conditioning

Product Information

PLA-ZRP125BA (Single Phase) Power Inverter Heat Pump 4-Way Blow Ceiling Cassette System

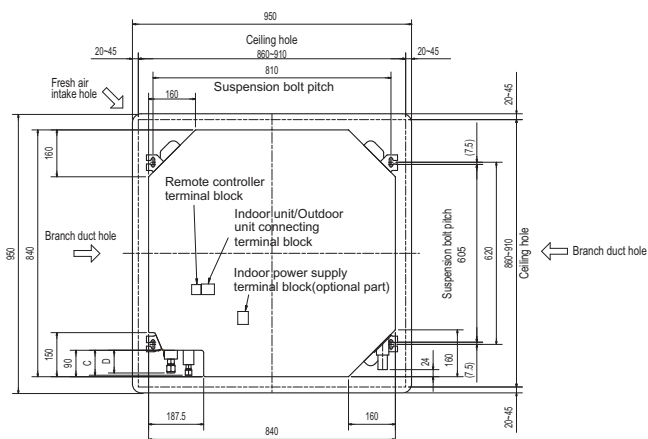
Making a
World of
Difference

PLA-ZRP - INDOOR UNITS		PLA-ZRP125BA
CAPACITY (kW)	Heating (nominal)	14.0 (5.0-16.0)
	Cooling (nominal)	12.5 (5.5-14.0)
	Heating (UK)	11.9 (4.25-13.6)
	Cooling (UK)	11.5 (5.05-12.9)
SHF (nominal & UK)		0.74
COP / EER (nominal)		3.81 / 3.23
SCOP / SEER (BS EN14825)		4.7 / 6.4
ERP ENERGY EFFICIENCY CLASS	Heating/Cooling	N/A
AIRFLOW (l/s)	Lo-Mi-Mi2-Hi	367-417-467-517
PIPE SIZE mm (in)	Gas/Liquid	15.88 (5/8") / 9.52 (3/8")
SOUND PRESSURE LEVEL (dBA)	Lo-Mi-Mi2-Hi	34-36-39-41
SOUND POWER LEVEL (dBA)		66
DIMENSIONS (mm)	Width x Depth x Height (Grille)	840 (950) x 840 (950) x 298 (35)
WEIGHT (kg)	Unit / Panel	27 / 6
ELECTRICAL SUPPLY		Fed by Outdoor Unit
FUSE RATING (BS88) - HRC (A)		6
INTERCONNECTING CABLE No. Cores		4
GRILLE REFERENCE		PLP-6BA
WIRED REMOTE CONTROLLER REFERENCE		PAR-31MAA

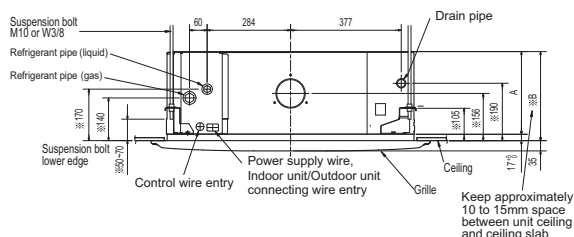
PUHZ-ZRP - OUTDOOR UNITS		PUHZ-ZRP125VKA2
SOUND PRESSURE LEVEL (dBA)	Heating/Cooling	52 / 50
SOUND POWER LEVEL (dBA)	Cooling	70
WEIGHT (kg)		116
DIMENSIONS (mm)	Width x Depth x Height	1050 x 330 + 40 x 1338
ELECTRICAL SUPPLY		220-240v, 50Hz
PHASE		Single
SYSTEM POWER	Heating/Cooling (nominal)	3.67 / 3.87
INPUT (kW)	Heating/Cooling (UK)	3.27 / 3.29
STARTING CURRENT (A)		12.0
SYSTEM RUNNING CURRENT (A)	Heating/Cooling [MAX]	16.37 / 17.30 [27.3]
FUSE RATING (BS88) - HRC (A)		32
MAINS CABLE No. Cores		3
MAX PIPE LENGTH (m)		75
MAX HEIGHT DIFFERENCE (m)		30
CHARGE R410A (kg) - 30m		5.0

DIMENSIONS

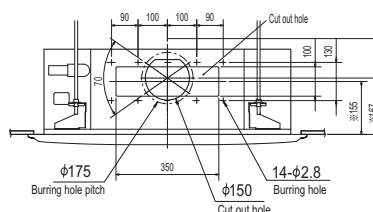
Upper View



Side View



Front View



Model	A	B	C	D	E
PLA-ZRP125BA	281	298	85	77	440



Telephone: 01707 282880

email: air.conditioning@meuk.mee.com web: www.airconditioning.mitsubishielectric.co.uk

UNITED KINGDOM Mitsubishi Electric Europe Living Environmental Systems Division
Travellers Lane, Hatfield, Hertfordshire, AL10 8XB, England General Enquiries Telephone: 01707 282880 Fax: 01707 278881

IRELAND Mitsubishi Electric Europe Westgate Business Park, Ballymount, Dublin 24, Ireland
Telephone: Dublin (01) 419 8800 Fax: Dublin (01) 419 8890 International code: (003531)

Country of origin: United Kingdom - Japan - Thailand - Malaysia. ©Mitsubishi Electric Europe 2015. Mitsubishi and Mitsubishi Electric are trademarks of Mitsubishi Electric Europe B.V. The company reserves the right to make any variation in technical specification to the equipment described, or to withdraw or replace products without prior notification or public announcement. Mitsubishi Electric is constantly developing and improving its products. All descriptions, illustrations, drawings and specifications in this publication present only general particulars and shall not form part of any contract. All goods are supplied subject to the Company's General Conditions of Sale, a copy of which is available on request. Third-party product and brand names may be trademarks or registered trademarks of their respective owners.



Note: The fuse rating is for guidance only. Please refer to the relevant databook for detailed specification. It is the responsibility of a qualified electrician/electrical engineer to select the correct cable size and fuse rating based on current regulation and site specific conditions. Mitsubishi Electric's air conditioning and heat pump systems contain fluorinated greenhouse gases R410A, R407C and R134a.



www.greengateway.mitsubishielectric.co.uk

Mitsubishi Electric UK's commitment
to the environment



Follow us @meuk_Jes
Follow us @green_gateway



Mitsubishi Electric
Living Environmental Systems UK



mitsubishielectric2

Effective as of April 2015