

Air Conditioning

Product Information

**PSA-RP125KA (Three Phase)
Standard Inverter Heat Pump
Floor Standing System**

Making a
World of
Difference

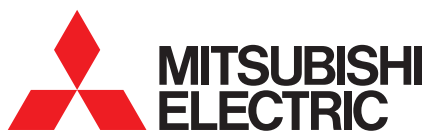
Mr.SLIM™



Our Standard Inverter range offers customers all the features and benefits of inverter technology whilst being cost effective. The PSA-RP Floor Standing System complements the Mitsubishi Electric range of indoor units. The sleek, modern design of this unit is ideal for numerous applications including bars and restaurants.

Key Features

- Built in controller
- Space saving
- Quick and easy installation
- Compact body/minimal space



Air Conditioning | Heating
Ventilation | Controls



Air Conditioning

Product Information

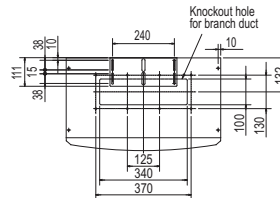
PSA-RP125KA (Three Phase)
Standard Inverter Heat Pump
Floor Standing System

Making a
 World of
 Difference

PSA-RP - INDOOR UNITS		PSA-RP125KA
CAPACITY (kW)	Heating (nominal)	14.0 (5.0-16.0)
	Cooling (nominal)	12.3 (5.5-14.0)
	Heating (UK)	11.9 (4.25-13.6)
	Cooling (UK)	11.3 (5.05-12.9)
SHF (nominal & UK)		0.72
COP / EER (nominal)		2.81 / 2.81
SCOP / SEER (BS EN14825)		3.7 / 3.5
E.P ENERGY EFFICIENCY CLASS Heating/Cooling		N/A
AIRFLOW (l/s)	Lo-Mi-Hi	417-467-517
PIPE SIZE mm (in)	Gas/Liquid	15.88 (5/8") / 9.52 (3/8")
SOUND PRESSURE LEVEL (dBA)	Lo-Mi-Hi	45-49-51
SOUND POWER LEVEL (dBA)		66
DIMENSIONS (mm)	Width x Depth x Height (Grille)	600 x 360 x 1900
	Unit / Panel	46
ELECTRICAL SUPPLY		Fed by Outdoor Unit
FUSE RATING (BS88) - HRC (A)		6
INTERCONNECTING CABLE No. Cores		4

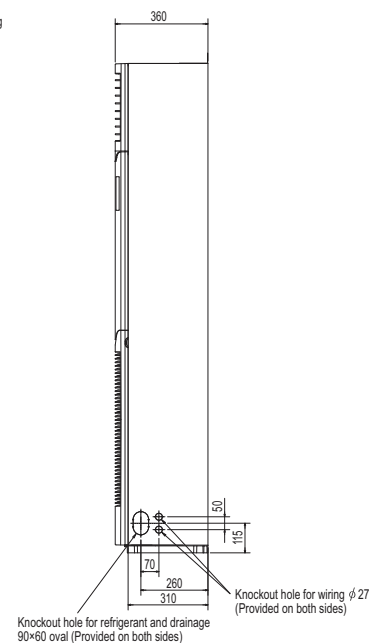
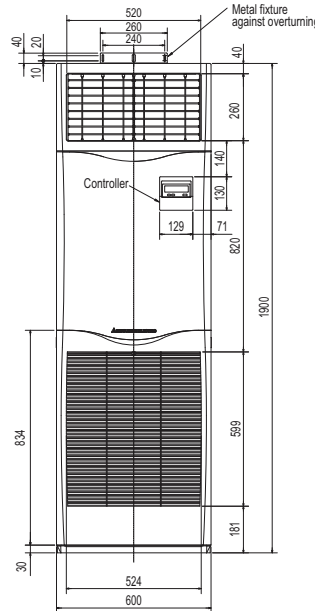
DIMENSIONS

Upper View



Front View

Side View



PUHZ-P - OUTDOOR UNITS		PUHZ-P125YHA Three Phase
SOUND PRESSURE LEVEL (dBA)	Heating/Cooling	55 / 51
SOUND POWER LEVEL (dBA) Cooling		71
WEIGHT (kg)		101
DIMENSIONS (mm) Width x Depth x Height		950 x 330 + 30 x 1350
ELECTRICAL SUPPLY		380-415v, 50Hz
PHASE		Three
SYSTEM POWER	Heating/Cooling (nominal)	4.98 / 4.38
	Heating/Cooling (UK)	4.43 / 3.72
STARTING CURRENT (A)		5.0
SYSTEM RUNNING CURRENT (A) Heating/Cooling [MAX]		6.82 / 6.91 [13.7]
FUSE RATING (BS88) - HRC (A)		16
MAINS CABLE No. Cores		5
MAX PIPE LENGTH (m)		50
MAX HEIGHT DIFFERENCE (m)		30
CHARGE R410A (kg) - 30m		4.5



Note: When used with a Mr Slim Multi-Split system PSA-RP cannot be connected with indoor units of different types



Telephone: 01707 282880

email: air.conditioning@meuk.mee.com web: www.airconditioning.mitsubishielectric.co.uk

UNITED KINGDOM Mitsubishi Electric Europe Living Environmental Systems Division
 Travellers Lane, Hatfield, Hertfordshire, AL10 8XB, England General Enquiries Telephone: 01707 282880 Fax: 01707 278881

IRELAND Mitsubishi Electric Europe Westgate Business Park, Ballymount, Dublin 24, Ireland
 Telephone: Dublin (01) 419 8800 Fax: Dublin (01) 419 8890 International code: (003531)

Country of origin: United Kingdom - Japan - Thailand - Malaysia. ©Mitsubishi Electric Europe 2015. Mitsubishi and Mitsubishi Electric are trademarks of Mitsubishi Electric Europe B.V. The company reserves the right to make any variation in technical specification to the equipment described, or to withdraw or replace products without prior notification or public announcement. Mitsubishi Electric is constantly developing and improving its products. All descriptions, illustrations, drawings and specifications in this publication present only general particulars and shall not form part of any contract. All goods are supplied subject to the Company's General Conditions of Sale, a copy of which is available on request. Third-party product and brand names may be trademarks or registered trademarks of their respective owners.



Note: The fuse rating is for guidance only. Please refer to the relevant databook for detailed specification. It is the responsibility of a qualified electrician/electrical engineer to select the correct cable size and fuse rating based on current regulation and site specific conditions. Mitsubishi Electric's air conditioning and heat pump systems contain fluorinated greenhouse gases R410A, R407C and R134a.



www.greengateway.mitsubishielectric.co.uk

Mitsubishi Electric UK's commitment to the environment



Follow us @meuk_Jes
 Follow us @green_gateway



Mitsubishi Electric
 Living Environmental Systems UK



mitsubishielectric2

Effective as of April 2015