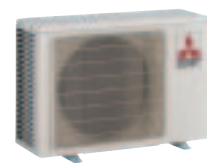
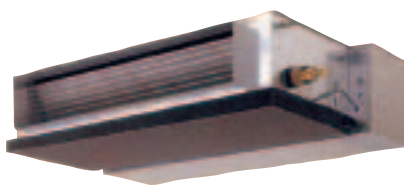


SEZ-A-AR Inverter Heat Pump

R410A Ceiling Concealed Ducted System

New Series

Designed for homes, offices, restaurants or shops, the SEZ-A-AR series operates at low noise levels, and is virtually invisible when installed within a suspended ceiling. Its low unit height and lightweight design also help to make installation easier and more convenient.



Technical Information >>

SEZ-A-AR - INDOOR UNITS

MODEL REFERENCE		SEZ-A12AR	SEZ-A18AR	SEZ-A24AR
CAPACITY (kW)	Heating (nominal)	3.9 (0.9-5.0)	5.9 (0.9-7.2)	6.9 (0.9-8.0)
	Cooling (nominal)	3.4 (1.0-3.8)	5.0 (1.1-5.6)	5.5 (1.1-6.3)
	Heating (UK)	3.25 (0.75-4.15)	4.9 (0.75-6.0)	5.75 (0.75-6.65)
	Cooling (UK)	3.35 (0.95-3.75)	4.95 (1.05-5.55)	5.45 (1.05-6.25)
SHF (nominal)		0.79	0.75	0.75
COP / EER (nominal)		3.55 / 3.12	3.21 / 2.81	2.82 / 2.81
ENERGY LABEL	Heating/Cooling	B / B	C / C	D / C
AIRFLOW (m ³ /min)	Lo-Hi	10-13	12-17	12-20
EXTERNAL STATIC PRESSURE Pa(mmAq) - Lo-Hi		30(3) / 50(5)	30(3) / 50(5)	30(3) / 50(5)
PIPE SIZE mm(in)	Gas	9.52 (3/8")	12.7 (1/2")	15.88 (5/8")
	Liquid	6.35 (1/4")	6.35 (1/4")	6.35 (1/4")
NOISE (dBA)	Lo-Hi	30-35	31-39	32-43
DIMENSIONS (mm)	Width	1100	1100	1100
	Depth	700	700	700
	Height	270	270	270
WEIGHT (kg)		33.5	33.5	33.5
ELECTRICAL SUPPLY		220-240v, 50Hz	220-240v, 50Hz	220-240v, 50Hz
POWER INPUT (kW)	(nominal)	0.048	0.061	0.087
	(UK)	0.048	0.061	0.087
STARTING CURRENT (A)		5.0	-	-
RUNNING CURRENT (A)		0.21	0.27	0.34
FUSE RATING (BS88) – HRC (A)		16	6	6

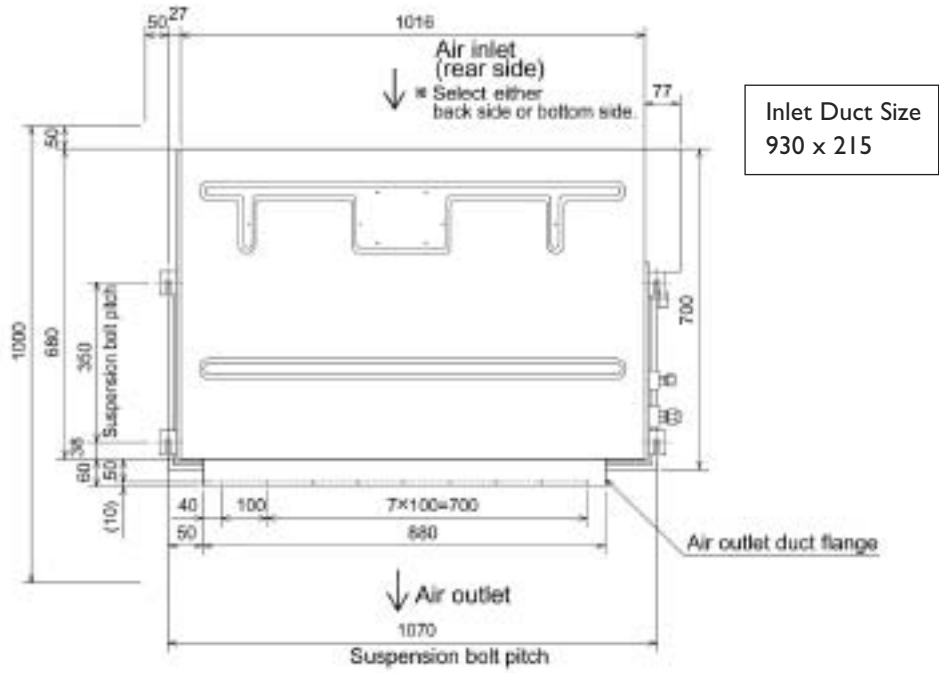
SUZ-A-VR - OUTDOOR UNITS

MODEL REFERENCE		SUZ-A12VR	SUZ-A18VR	SUZ-A24VR
NOISE (dBA)		47	55	55
WEIGHT (kg)		34	53	53
DIMENSIONS (mm)	Width	800	840	840
	Depth	285	330	330
	Height	550	850	850
ELECTRICAL SUPPLY		Fed by Indoor Unit	220-240v, 50Hz	220-240v, 50Hz
POWER INPUT (kW)	Heating/Cooling (nominal)	1.052 / 1.042	1.779 / 1.719	2.363 / 1.873
	Heating/Cooling (UK)	0.957 / 0.834	1.619 / 1.375	2.15 / 1.498
STARTING CURRENT (A)		-	8.23	10.06
RUNNING CURRENT (A) Heating/Cooling		4.69 / 4.79	8.23 / 7.73	10.06 / 8.66
INTERCONNECTING CABLE No. CORES		4 Core 240v	2 Core 12v	2 Core 12v
MAX PIPE LENGTH (m)		20	30	30
MAX HEIGHT DIFFERENCE (m)		12	15	15
CHARGE R410A (kg) - 7m		0.90	1.80	1.80
FUSE RATING (BS88) – HRC (A)		-	20	25

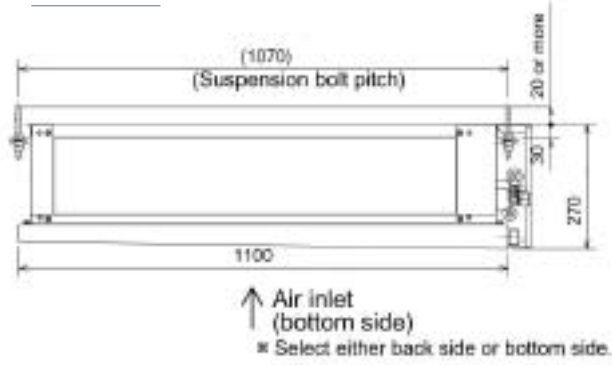
Notes: The SEZ-A18-24AR indoor units require a 240V 50hz single phase supply and the outdoor units require the same, separate supply. Between the indoor and outdoor units is a 2 core, low voltage interconnecting cable.

INDOOR UNIT SEZ-A12AR, SEZ-A18AR and SEZ-A24AR

Upper View >



Front View >



Side View >

