

Air Conditioning

Product Information

SEZ-KD25VAQ (Single Phase)
Inverter Heat Pump
Ceiling Concealed Ducted System

Making a
World of
Difference

mr.slim™



Designed for offices, restaurants and shops, the SEZ-KD series operates at low noise levels. Its low unit height and lightweight design also help to make installation easier and more convenient.

Key Features

- Optimised Rotary or Scroll Compressor
- Inverter Control - adjusts performance to economically match the demand for heating or cooling
- Auto-Restart
- Quiet Operation
- Auto-Changeover
- Hot Start - draught prevention
- Low Unit Height - minimal intrusion into occupied space
- Double Thermostat Function - control the temp via a sensor in the controller or the unit (wired remote controllers only) replace technology available



Air Conditioning | Heating
Ventilation | Controls

Air Conditioning

Product Information

SEZ-KD25VAQ (Single Phase)
Inverter Heat Pump
Ceiling Concealed Ducted System

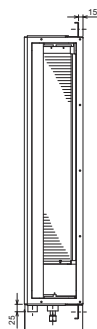
Making a
World of
Difference

SEZ-KD-VAQ - INDOOR UNITS		SEZ-KD25VAQ
CAPACITY (kW)	Heating (nominal)	2.9 (1.3-4.5)
	Cooling (nominal)	2.5 (1.5-3.2)
	Heating (UK)	2.47 (1.11-3.83)
	Cooling (UK)	2.30 (1.38-2.94)
SHF (nominal & UK)		0.8
COP / EER (nominal)		3.61 / 3.42
SCOP / SEER (BS EN14825)		3.8 / 5.2
EP ENERGY EFFICIENCY CLASS	Heating/Cooling	A / A
AIRFLOW (l/s)	Lo-Mi-Hi	100-117-150
PIPE SIZE mm (in)	Gas	9.52 (3/8")
	Liquid	6.35 (1/4")
EXTERNAL STATIC PRESSURE (Pa)		5-15-35-50
SOUND PRESSURE LEVEL (dBA)	Lo-Mi-Hi	22-25-29
SOUND POWER LEVEL (dBA)		50
DIMENSIONS (mm)	Width x Depth x Height	790 x 700 x 200
WEIGHT (kg)		18
ELECTRICAL SUPPLY		Fed by Outdoor Unit
FUSE RATING (BS88) - HRC (A)		6
INTERCONNECTING CABLE No. Cores		4

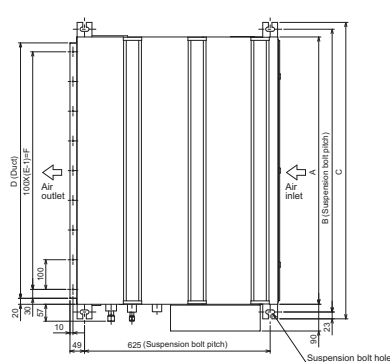
SUZ-KA-VA4 - OUTDOOR UNITS		SUZ-KA25VA4
SOUND PRESSURE LEVEL (dBA) Heating/Cooling		48 / 47
SOUND POWER LEVEL (dBA) Heating/Cooling		58
WEIGHT (kg)		30
DIMENSIONS (mm)	Width x Depth x Height	800 x 285 x 550
ELECTRICAL SUPPLY		220-240v, 50Hz
PHASE		Single
SYSTEM POWER	Heating/Cooling (nominal)	0.80 / 0.73
	Heating/Cooling (UK)	0.71 / 0.62
STARTING CURRENT (A)		3.8
SYSTEM RUNNING CURRENT (A)	Heating/Cooling [MAX]	3.50 / 3.80 [7.4]
FUSE RATING (BS88) - HRC (A)		10
MAINS CABLE No. Cores		3
MAX PIPE LENGTH (m)		20
MAX HEIGHT DIFFERENCE (m)		12
CHARGE R410A (kg) - 7m		0.80

DIMENSIONS

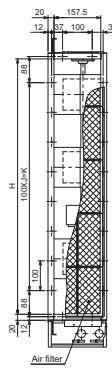
Front View



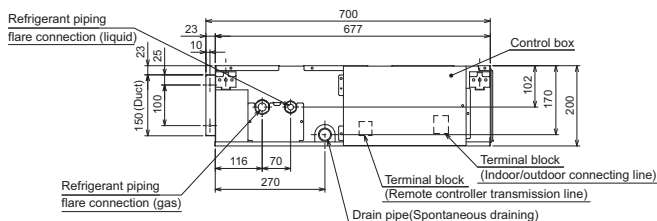
Upper View



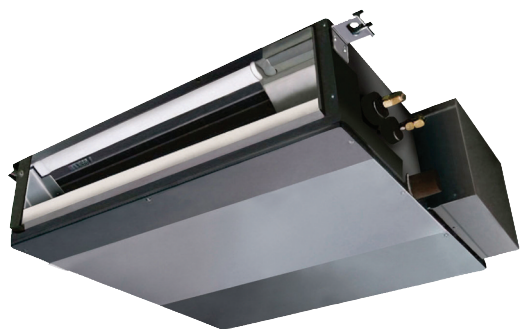
Back View



Side View



Model	A	B	C	D	E	F	G	H	J	K	L
SEZ-KD25VAQ	700	752	798	660	7	600	800	660	5	500	16



Telephone: 01707 282880

email: air.conditioning@meuk.mee.com web: www.airconditioning.mitsubishielectric.co.uk

UNITED KINGDOM Mitsubishi Electric Europe Living Environmental Systems Division
Travellers Lane, Hatfield, Hertfordshire, AL10 8XB, England General Enquiries Telephone: 01707 282880 Fax: 01707 278881

IRELAND Mitsubishi Electric Europe Westgate Business Park, Ballymount, Dublin 24, Ireland
Telephone: Dublin (01) 419 8800 Fax: Dublin (01) 419 8890 International code: (003531)

Country of origin: United Kingdom - Japan - Thailand - Malaysia. ©Mitsubishi Electric Europe 2015. Mitsubishi and Mitsubishi Electric are trademarks of Mitsubishi Electric Europe B.V. The company reserves the right to make any variation in technical specification to the equipment described, or to withdraw or replace products without prior notification or public announcement. Mitsubishi Electric is constantly developing and improving its products. All descriptions, illustrations, drawings and specifications in this publication present only general particulars and shall not form part of any contract. All goods are supplied subject to the Company's General Conditions of Sale, a copy of which is available on request. Third-party product and brand names may be trademarks or registered trademarks of their respective owners.



Note: The fuse rating is for guidance only. Please refer to the relevant databook for detailed specification. It is the responsibility of a qualified electrician/electrical engineer to select the correct cable size and fuse rating based on current regulation and site specific conditions. Mitsubishi Electric's air conditioning and heat pump systems contain fluorinated greenhouse gases R410A, R407C and R134a.



www.greengateway.mitsubishielectric.co.uk

Mitsubishi Electric UK's commitment
to the environment



Follow us @meuk_Jes
Follow us @green_gateway



Mitsubishi Electric
Living Environmental Systems UK



[mitsubishielectric2](https://www.youtube.com/mitsubishielectric2)

Effective as of April 2015