

# Air Conditioning

## Product Information

**SEZ-KD60VAQ** (Single Phase)  
**Inverter Heat Pump**  
Ceiling Concealed Ducted System

Making a  
World of  
Difference

mr.slim™



Designed for offices, restaurants and shops, the SEZ-KD series operates at low noise levels. Its low unit height and lightweight design also help to make installation easier and more convenient.

### Key Features

- Optimised Rotary or Scroll Compressor
- Inverter Control - adjusts performance to economically match the demand for heating or cooling
- Auto-Restart
- Quiet Operation
- Auto-Changeover
- Hot Start - draught prevention
- Low Unit Height - minimal intrusion into occupied space
- Double Thermostat Function - control the temp via a sensor in the controller or the unit (wired remote controllers only) replace technology available



Air Conditioning | Heating  
Ventilation | Controls

# Air Conditioning

## Product Information

**SEZ-KD60VAQ** (Single Phase)  
Inverter Heat Pump  
Ceiling Concealed Ducted System

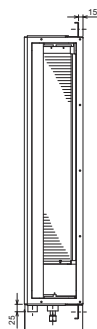
Making a  
World of  
Difference

SEZ-KD-VAQ - INDOOR UNITS		SEZ-KD60VAQ
CAPACITY (kW)	Heating (nominal)	7.4 (2.5-8.0)
	Cooling (nominal)	5.6 (2.3-6.3)
	Heating (UK)	6.29 (2.13-6.80)
	Cooling (UK)	5.15 (2.12-5.80)
SHF (nominal & UK)		0.79
COP / EER (nominal)		3.36 / 3.22
SCOP / SEER (BS EN14825)		4.1 / 5.2
EP ENERGY EFFICIENCY CLASS	Heating/Cooling	A+ / A
AIRFLOW (l/s)	Lo-Mi-Hi	200-250-300
PIPE SIZE mm (in)	Gas	15.88 (5/8")
	Liquid	6.35 (1/4")
EXTERNAL STATIC PRESSURE (Pa)		5-15-35-50
SOUND PRESSURE LEVEL (dBA)	Lo-Mi-Hi	29-33-37
SOUND POWER LEVEL (dBA)		58
DIMENSIONS (mm)	Width x Depth x Height	1190 x 700 x 200
WEIGHT (kg)		27
ELECTRICAL SUPPLY		Fed by Outdoor Unit
FUSE RATING (BS88) - HRC (A)		6
INTERCONNECTING CABLE No. Cores		4

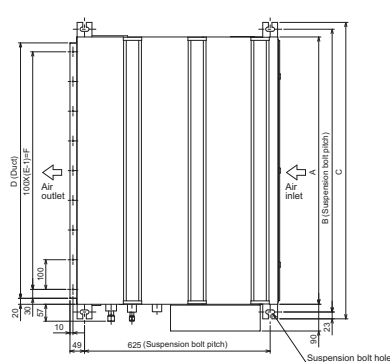
SUZ-KA-VA4 - OUTDOOR UNITS		SUZ-KA60VA4
SOUND PRESSURE LEVEL (dBA)	Heating/Cooling	55 / 55
	Heating/Cooling	65
SOUND POWER LEVEL (dBA)	Heating/Cooling	50
WEIGHT (kg)		50
DIMENSIONS (mm)	Width x Depth x Height	840 x 330 x 880
ELECTRICAL SUPPLY		220-240v, 50Hz
PHASE		Single
SYSTEM POWER	Heating/Cooling (nominal)	2.20 / 1.74
INPUT (kW)	Heating/Cooling (UK)	1.96 / 1.48
STARTING CURRENT (A)		9.1
SYSTEM RUNNING CURRENT (A)	Heating/Cooling [MAX]	7.90 / 9.10 [14.7]
FUSE RATING (BS88) - HRC (A)		20
MAINS CABLE No. Cores		3
MAX PIPE LENGTH (m)		30
MAX HEIGHT DIFFERENCE (m)		30
CHARGE R410A (kg) - 7m		1.80

## DIMENSIONS

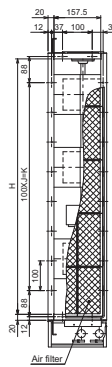
Front View



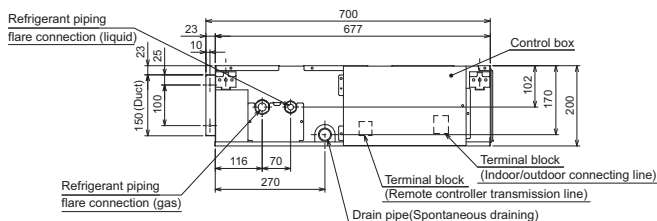
Upper View



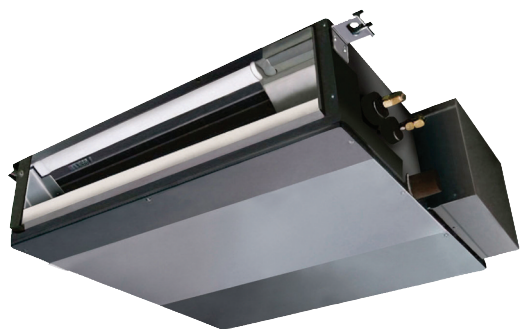
Back View



Side View



Model	A	B	C	D	E	F	G	H	J	K	L
SEZ-KD60VAQ	1100	1152	1198	1060	11	1000	1200	1060	9	900	24



Telephone: 01707 282880

email: [air.conditioning@meuk.mee.com](mailto:air.conditioning@meuk.mee.com) web: [www.airconditioning.mitsubishielectric.co.uk](http://www.airconditioning.mitsubishielectric.co.uk)

UNITED KINGDOM Mitsubishi Electric Europe Living Environmental Systems Division

Travellers Lane, Hatfield, Hertfordshire, AL10 8XB, England General Enquiries Telephone: 01707 282880 Fax: 01707 278881

IRELAND Mitsubishi Electric Europe Westgate Business Park, Ballymount, Dublin 24, Ireland

Telephone: Dublin (01) 419 8800 Fax: Dublin (01) 419 8890 International code: (003531)

Country of origin: United Kingdom - Japan - Thailand - Malaysia. ©Mitsubishi Electric Europe 2015. Mitsubishi and Mitsubishi Electric are trademarks of Mitsubishi Electric Europe B.V. The company reserves the right to make any variation in technical specification to the equipment described, or to withdraw or replace products without prior notification or public announcement. Mitsubishi Electric is constantly developing and improving its products. All descriptions, illustrations, drawings and specifications in this publication present only general particulars and shall not form part of any contract. All goods are supplied subject to the Company's General Conditions of Sale, a copy of which is available on request. Third-party product and brand names may be trademarks or registered trademarks of their respective owners.



**Note:** The fuse rating is for guidance only. Please refer to the relevant databook for detailed specification. It is the responsibility of a qualified electrician/electrical engineer to select the correct cable size and fuse rating based on current regulation and site specific conditions. Mitsubishi Electric's air conditioning and heat pump systems contain fluorinated greenhouse gases R410A, R407C and R134a.



[www.greengateway.mitsubishielectric.co.uk](http://www.greengateway.mitsubishielectric.co.uk)

Mitsubishi Electric UK's commitment  
to the environment



Follow us @meuk\_Jes  
Follow us @green\_gateway



Mitsubishi Electric  
Living Environmental Systems UK



[mitsubishielectric2](https://www.youtube.com/mitsubishielectric2)

Effective as of April 2015